
Notes

The electric window raising unit can be operated under the following conditions:

With ignition switched on, all window raising units can be operated.

With type 107.023 the safety switch (6) must be closed. The rear window raising unit function can be interrupted by means of safety switch.

With the ignition switched off, the window raising unit can only be operated when either of the front doors are open.

Note: This function does not exist on USA vehicles.

Electrical function of the window raising unit

a) With ignition switched on, relay (2) closes. The circuit is completed by the supplementary fuse, rocker switch and the window raising motor. When a rocker switch is operated, both contacts in the switch are closed so that one contact is still connected to the motor and + connection, and the other to ground. Therefore when the switch is operated the motor runs.

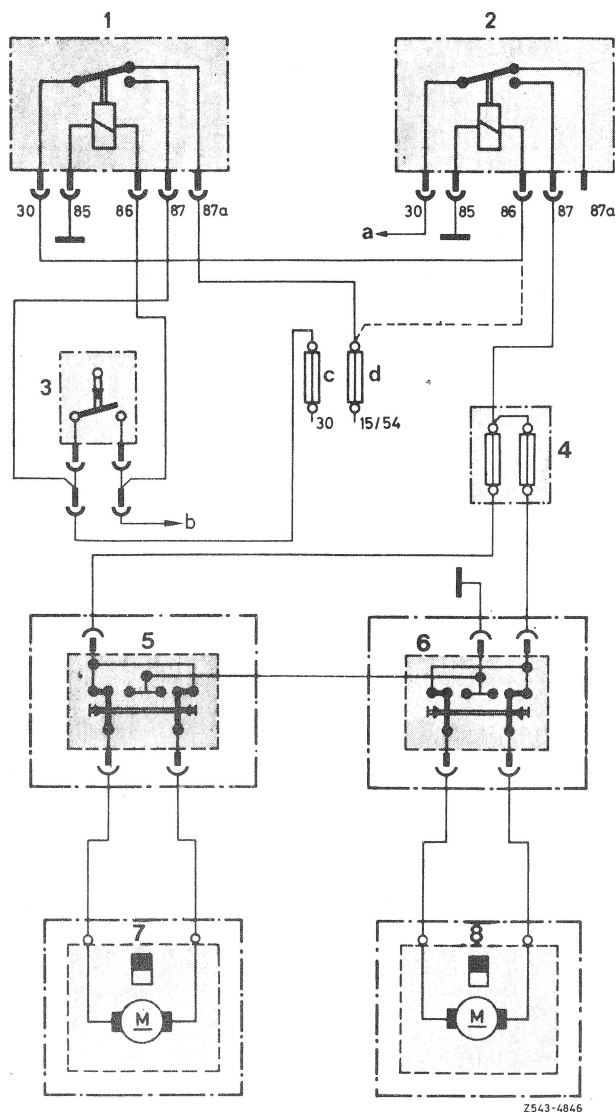
If another direction of movement is required (up or down movement of the window) the contacts are so switched that the voltage polarities to the motor are reversed.

The window raiser is thus caused to run in the opposite direction.

b) With ignition switched off and either of the front doors open, one of the door contacts is closed. Therefore the relay contact 30/87 is closed and the relay terminal 86 becomes live and likewise closes.

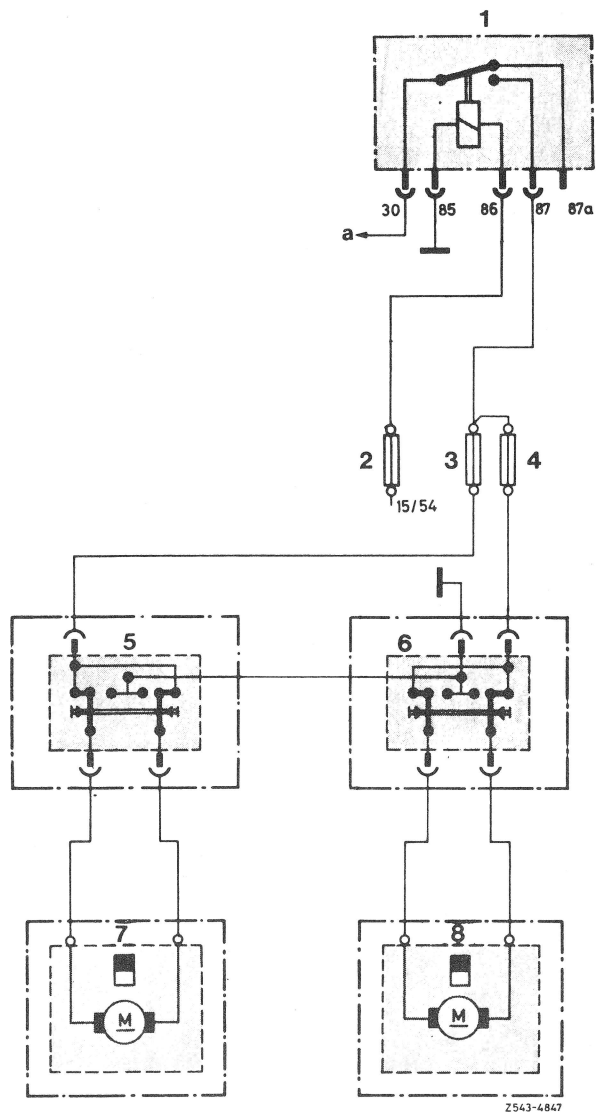
For the rest, the operation is the same as that with ignition switched on.

82.1 Electrical Function of the Window Raising Unit



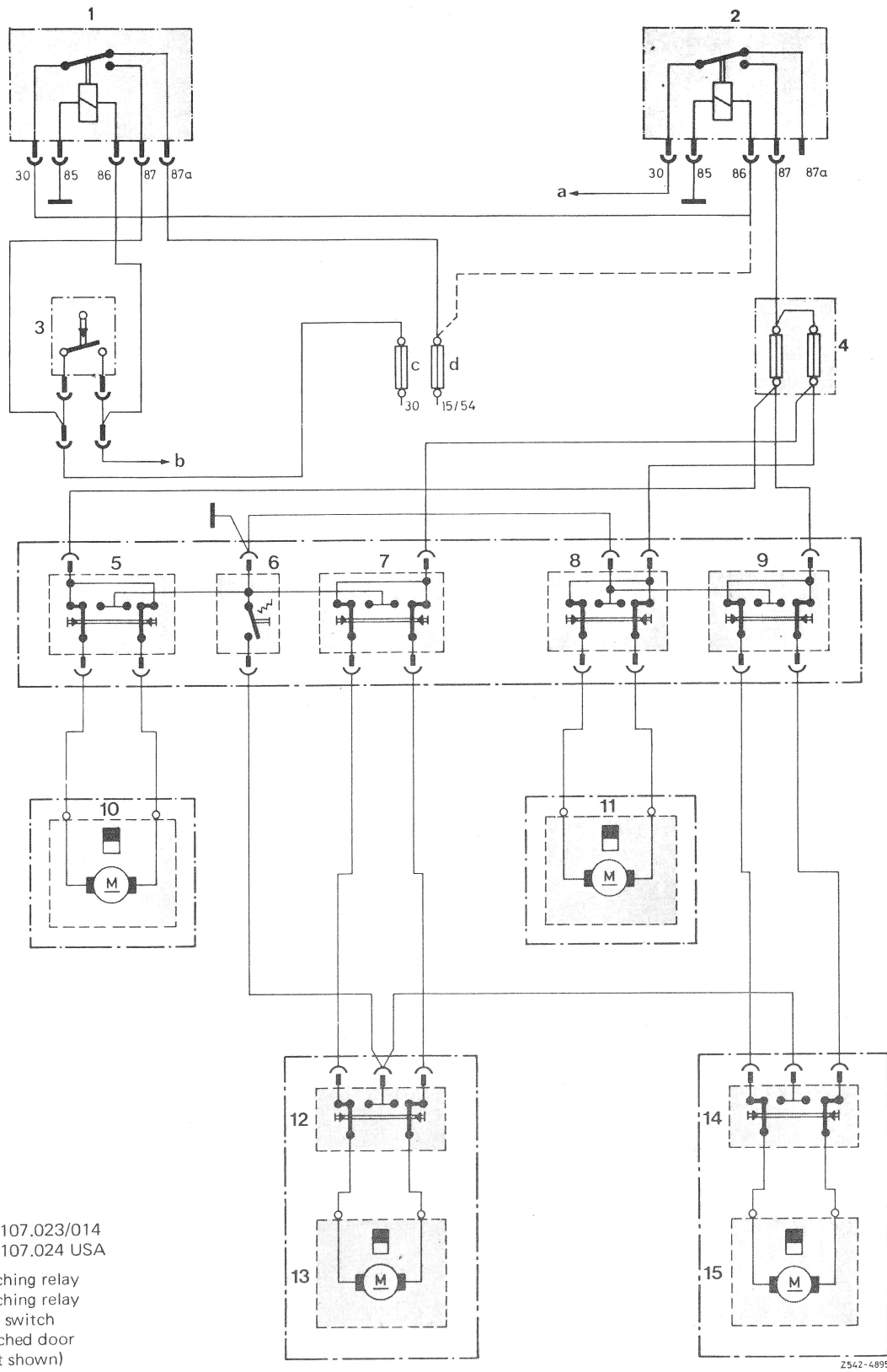
Circuit diagram 107.043, 107.044
107.044 USA to final chassis No. 005 325

- | | |
|---|--|
| 1 Contact switching relay | 7 Window raising motor left |
| 2 Contact switching relay | 8 Window raising motor right |
| 3 Door contact switch
(parallel switched door
contact is not shown) | a To 30 (3 point cable
connection) |
| 4 Supplementary fuses 2 x 16 A | b To interior lights |
| 5 Middle console rocker switch | c Fuse No. 2 |
| 6 Middle console rocker switch | d Fuse No. 8 |
| | --- USA vehicle, no
relay pos. 1 and
door contact
switch pos. 3 |



Circuit diagram 107.044 USA from final chassis No. 005 326

- | | |
|-----------------------------------|-----------------------------------|
| 1 Contact switching relay | 6 Middle console rocker switch |
| 2 Fuse No. 12 (8 A) | 7 Window raising motor left |
| 3 Fuse No. 3 (16 A) | 8 Window raising motor right |
| 4 Fuse No. 4 (16 A) | a To 30 (3 point cable connector) |
| 5 Middle console
rocker switch | |



Circuit diagram 107.023/014
107.024 USA

- 1 Contact switching relay
- 2 Contact switching relay
- 3 Door contact switch
(parallel switched door contact is not shown)
- 4 Supplementary fuse 2 x 16 A
- 5 Middle console rocker switch
- 6 Safety switch
- 7 Middle console rocker switch
- 8 Middle console rocker switch
- 9 Middle console rocker switch
- 10 Window raising motor front left

- 11 Window raising motor front right
- 12 Rear left window rocker switch
- 13 Window raising motor rear left
- 14 Rear right window rocker switch
- 15 Rear right window raising motor

- b To interior lights
- c Fuse No. 2
- d Fuse No. 8
- USA vehicles, no relay pos. 1 and door contact switch pos. 3

Z542-4895

