

A. Model 116

**Tightening torque**

Nm

Immersion tube indicator

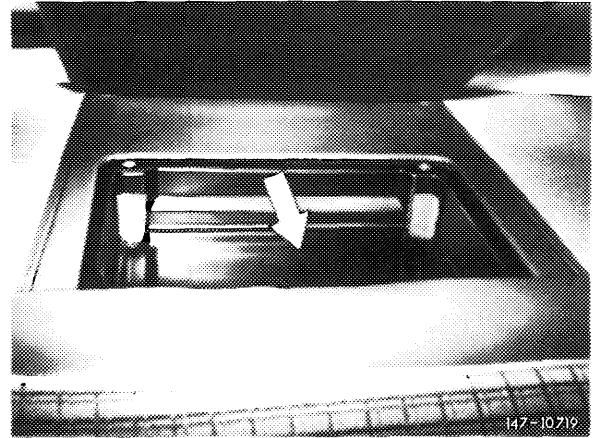
35-43

---

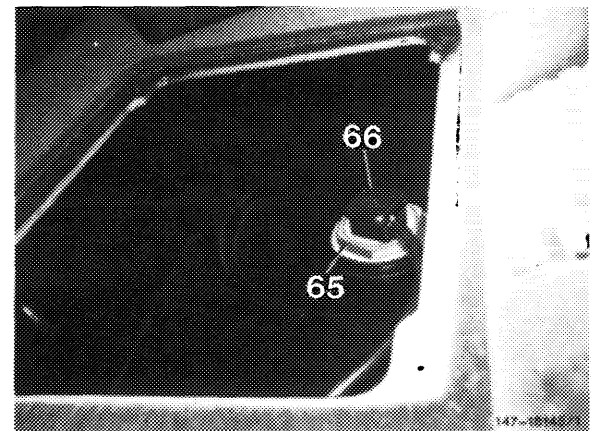
**Removal**

---

1 Remove first aid kit and first aid kit mounting shell (arrow).



2 Pull coupler (66) for fuel gage from immersion tube indicator (65) and protect with wire against slipping off.



3 Unscrew immersion tube indicator.

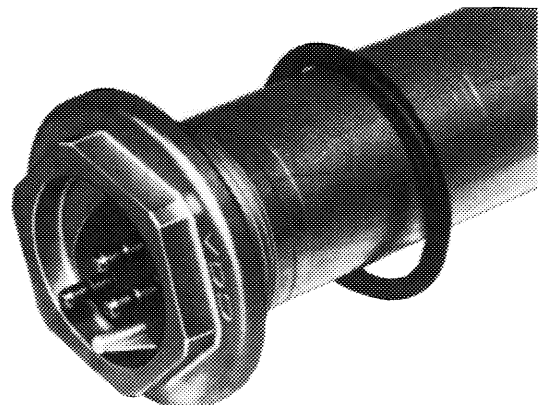
**Note:** Let immersion tube indicator run dry, if required.

**Installation**

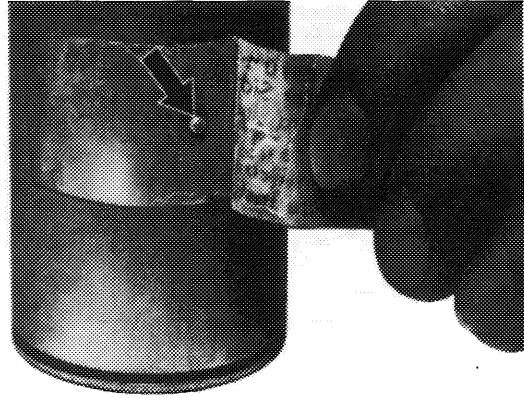
---

4 For installation proceed vice versa, while proceeding as follows:

a) Use new rubber sealing ring.



- b) Remove locking pin (arrow) prior to installing immersion tube indicator.
- c) Check fuel gage for function.
- d) Tighten immersion tube indicator to 35–43 Nm.
- e) Plug-on coupler for fuel gage.
- f) Check for leaks.



107-10702

## B. Model 123 T-sedan

### Tightening torque

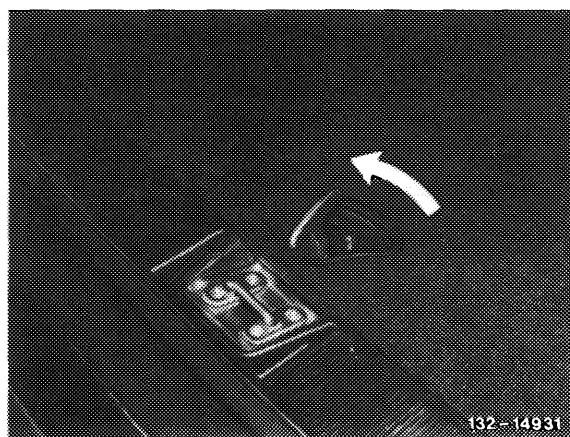
Nm

Immersion tube indicator

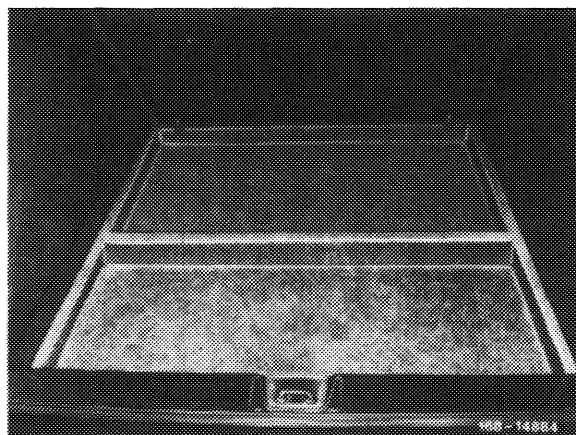
35–43

### Removal

- 1 Loosen trunk floor by turning tommy lock and remove.

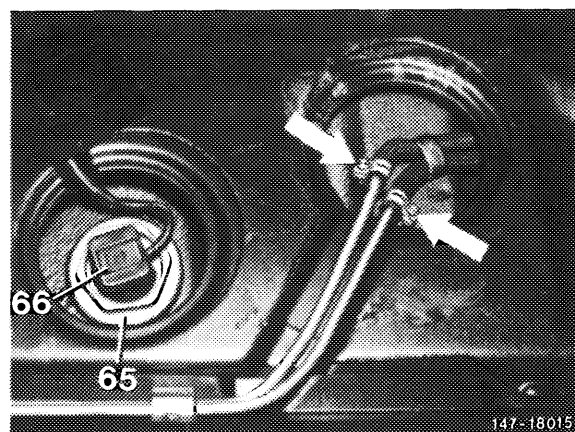


- 2 Remove storage shelf.



- 3 Pull off coupler (66) for fuel gage and unscrew immersion tube indicator (65).

**Note:** Let immersion tube indicator run dry, if required.

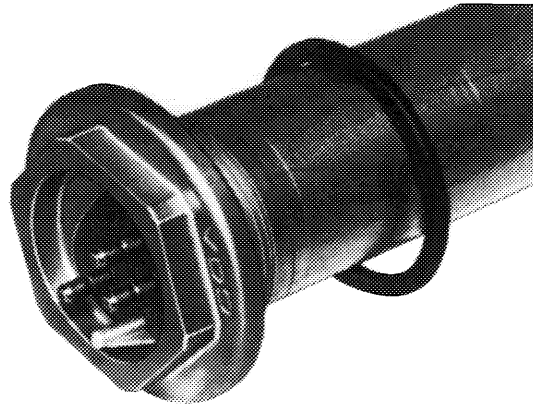


## Installation

---

4 For installation proceed vice versa as follows:

a) Use new rubber sealing ring.



147-10810

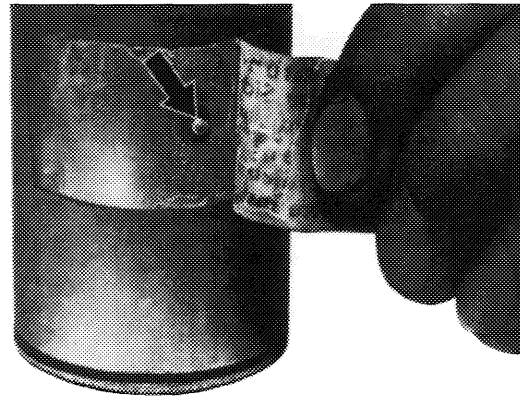
b) Prior to installation of immersion tube indicator, remove locking pin (arrow).

c) Check fuel gage for function.

d) Tighten immersion tube indicator to 35–43 Nm.

e) Plug-on coupler for fuel gage.

f) Check for leaks.



107-10702

## C. Model 126

### Tightening torque

Nm

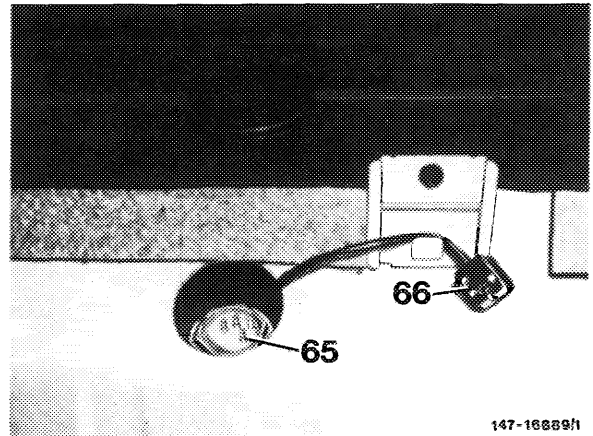
Immersion tube indicator

35–43

### Removal

- 1 Remove rear seat bench and backrest (refer to section covering body).
- 2 Remove filler cap.
- 3 Pull off coupler (66) and protect against slipping off.
- 4 Unscrew immersion tube indicator (65).

**Note:** Let immersion tube indicator run dry, if required.



### Installation

- 5 For installation proceed vice versa as follows:
  - a) Use new rubber sealing ring.
  - b) Prior to inserting a new immersion tube indicator, remove locking pin (arrow).
  - c) Check fuel gage for function.
  - d) Tighten immersion tube indicator to 35–43 Nm.
  - e) Plug-on coupler for fuel gage.
  - f) Check for leaks.

