

Click on the page number to go to schematic location

## INDEX

MODEL	SALES DESIGNATION
107.045	380 SL

CIRCUIT	PAGE	CIRCUIT	PAGE
Air Injection Management	Previous Index	Lights (continued)	
Anti Lock Brake System	132	—Glove Box	Previous Index
Automatic Antenna	127	—Hazard	Previous Index
Automatic Climate Control	141	—Headlights	Previous Index
Auxiliary Fan	123	—Instrument Cluster	122
Charging System	Previous Index	—License	Previous Index
Cigar Lighter	127	—Marker	Previous Index
Clock	120	—Park	Previous Index
Cold Start	Previous Index	—Stop	Previous Index
Component Locations	201	—Tail	Previous Index
Cruise Control	Previous Index	—Trunk	Previous Index
Diagnostic Socket	Previous Index	—Turn Signal	Previous Index
Fuel Delivery	Previous Index	—Vanity	121/1
Fuse Box	Previous Index	Outside Heated Mirrors	130
Fuse-Circuit List	Previous Index	Power Distribution	Previous Index
Gauges	Previous Index	Power Distribution—ACC	141
Ground Distribution	138	Power Windows	126
Ground Distribution — ACC	141	Radio	127
Heated Seats	128	Rear Defogger	125
Horns	123	RH Outside Mirror	129
Idle Speed Stabilization	Previous Index	Start	Previous Index
Ignition	Previous Index	Supplemental Restraint System	131
Lambda Control	Previous Index	Tachometer	Previous Index
Lights		Transmission Kickdown	Previous Index
—Backup	Previous Index	Warning Indicators	Previous Index
—Center Console	122	Warning System	Previous Index
—Courtesy	121	Wiper/Washer	124
—Fog Lights	Previous Index		

Component Locations

REVISIONS:

## FUSE-CIRCUIT LIST

No.	Fuse		Circuits Protected	Connection to Circuit
	Amps (Color)			
1	8 (WT) ① 16 (PK)		Cigar Lighter/Radio Glove Box Lamp Heated Seats RH Outside Mirror	15R
2	16 (PK)		Headlamps Wiper/Washer	15R
3	16 (PK)		Power Windows (RH)	15
4	16 (PK)		Power Windows (LH)	15
5	8 (WT)		Anti-Lock Brake System Power Windows Stop Lamps/Cruise Control Turn Signal/Hazard Lamps Warning Indicators Warning System	15
6	25 (BU)		Automatic Climate Control	15X
7	8 (WT)		Air Injection Management Automatic Climate Control Auxiliary Fan Backup Lamps Transmission Kickdown Warning Indicators Warning System	15
8	8 (WT) ②		Horns Outside Heated Mirrors	15
9			Not Used	
10	16 (PK)		Rear Defogger	15

No.	Fuse		Circuits Protected	Connection to Circuit
	Amps (Color)			
11	8 (WT)		Not Used	
12	8 (WT)		Automatic Antenna Clock Courtesy Lamps Diagnostic Socket Radio Trunk Lamp Turn Signal/Hazard Lamps Warning System	30
13	8 (WT)		Illumination: Instrument Cluster/Center Console Lamps: Marker/License Lamps: Park/Tail (RH) Warning System	58R
14	16 (PK)		Auxiliary Fan	30
15	8 (WT)		Not Used	
16	8 (WT)		Lamps: Park/Tail (LH)	58L
17	8 (WT)		Headlamps (RH High Beam & Indicator)	56a
18	8 (WT)		Headlamps (LH High Beams)	56a
19	16 (PK)		Headlamps (RH Low Beam)/ Fog Lamps	56b
20	8 (WT)		Headlamps (LH Low Beam)	56b

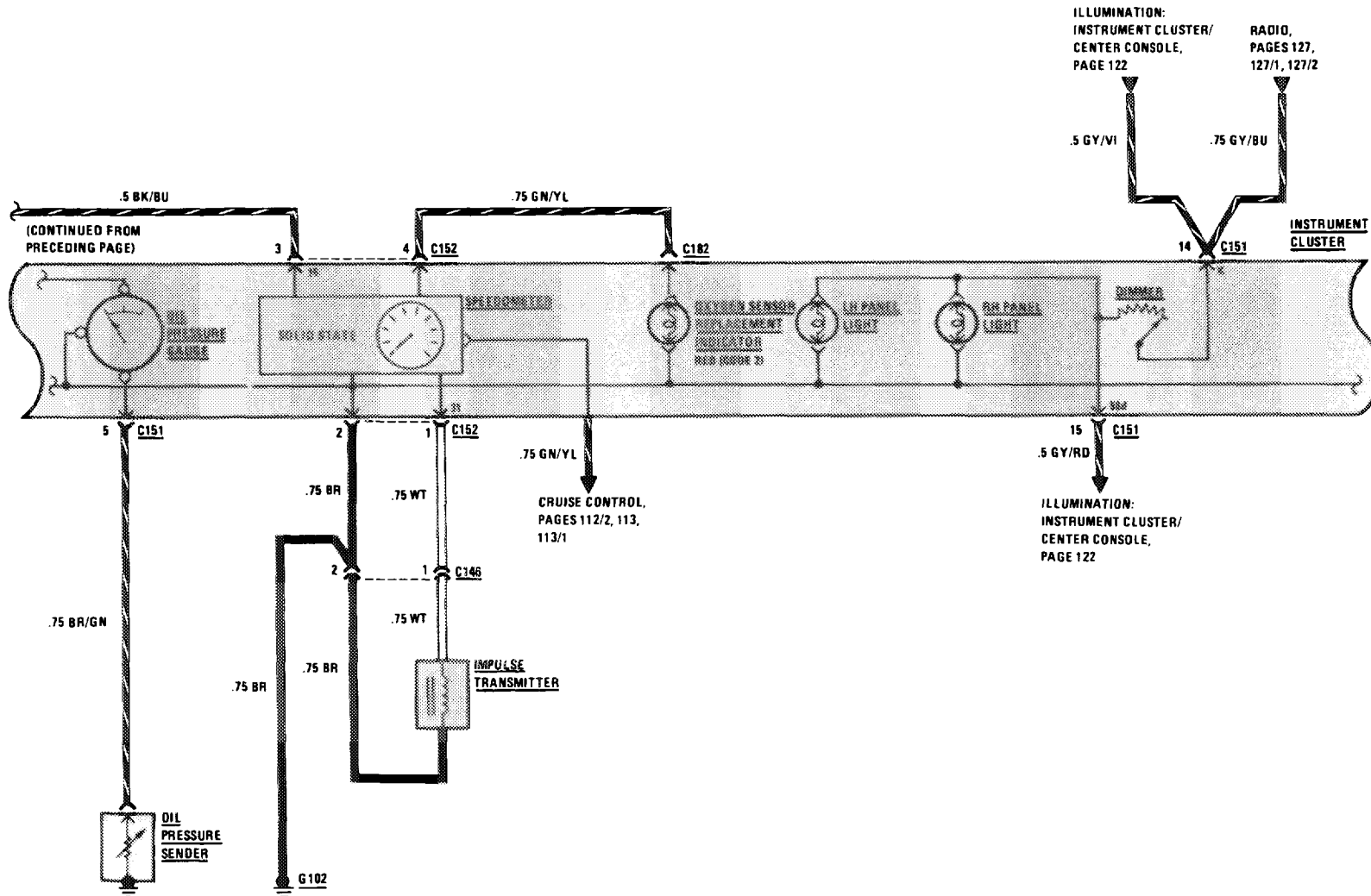
## REVISIONS:

- ① WITH HEATED SEATS  
② 16 AMP (AS OF MODEL YEAR 1985)

# WARNING INDICATORS/GAUGES/CLOCK

(For Component Locations See Page 212)

MY 1983/MY 1984/  
MY 1985  
380 SL



107.045

119

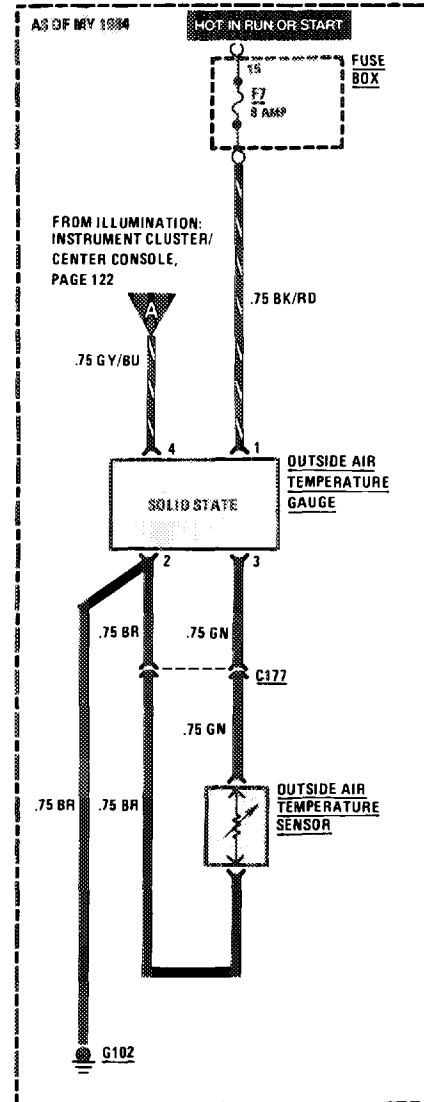
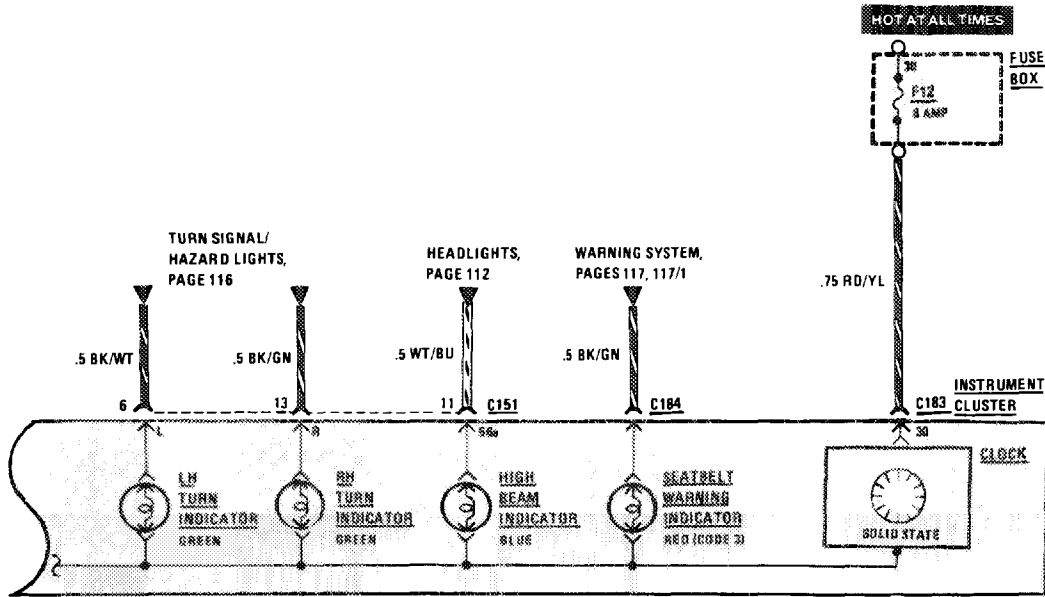
REVISIONS:

--	--	--

# WARNING INDICATORS/GAUGES/CLOCK

(For Component Locations See Page 212)

MY 1983/MY 1984/  
MY 1985 380 SL



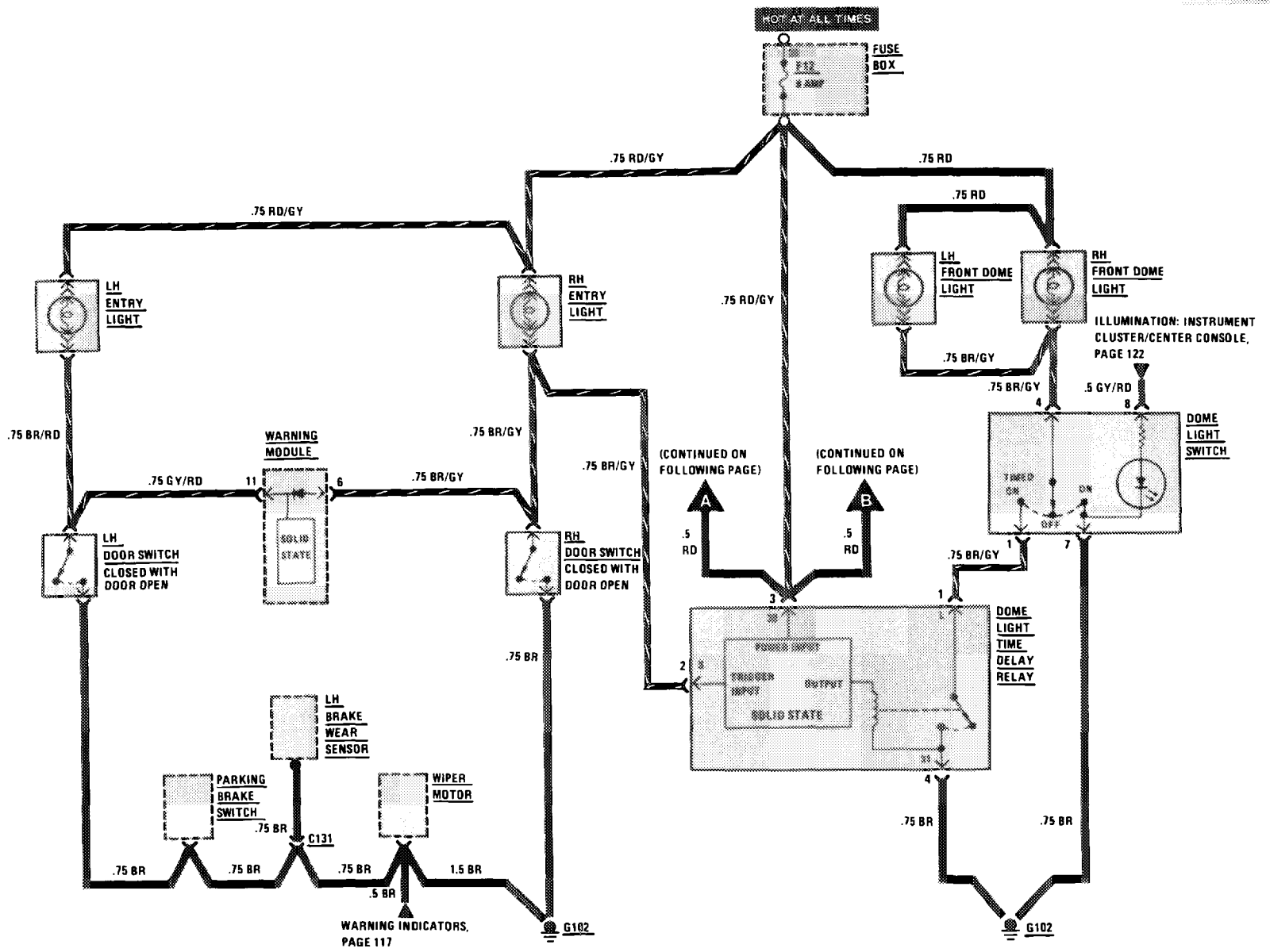
REVISIONS:

# COURTESY LIGHTS

(For Component Locations See Page 204)

MY 1983/MY 1984

380 SL



107.045

121

REVISIONS:

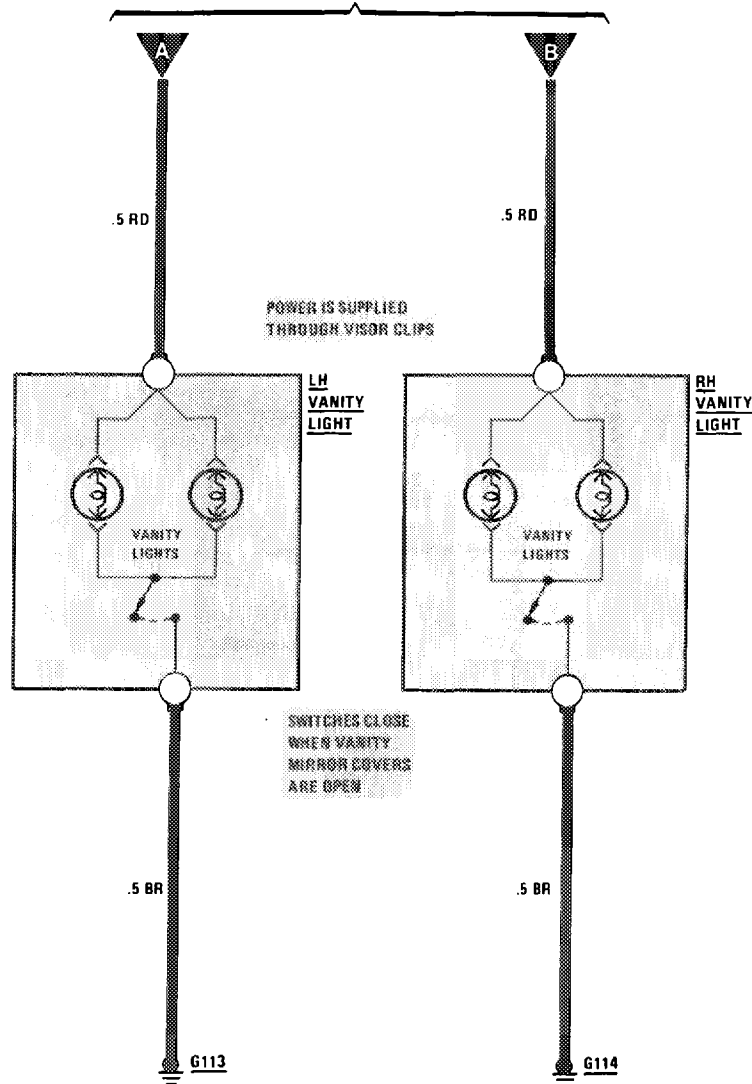
--	--	--

# VANITY LIGHTS

(For Component Locations See Page 204)

MY 1983/MY 1984  
380 SL

(CONTINUED FROM PRECEDING PAGE)



107.045

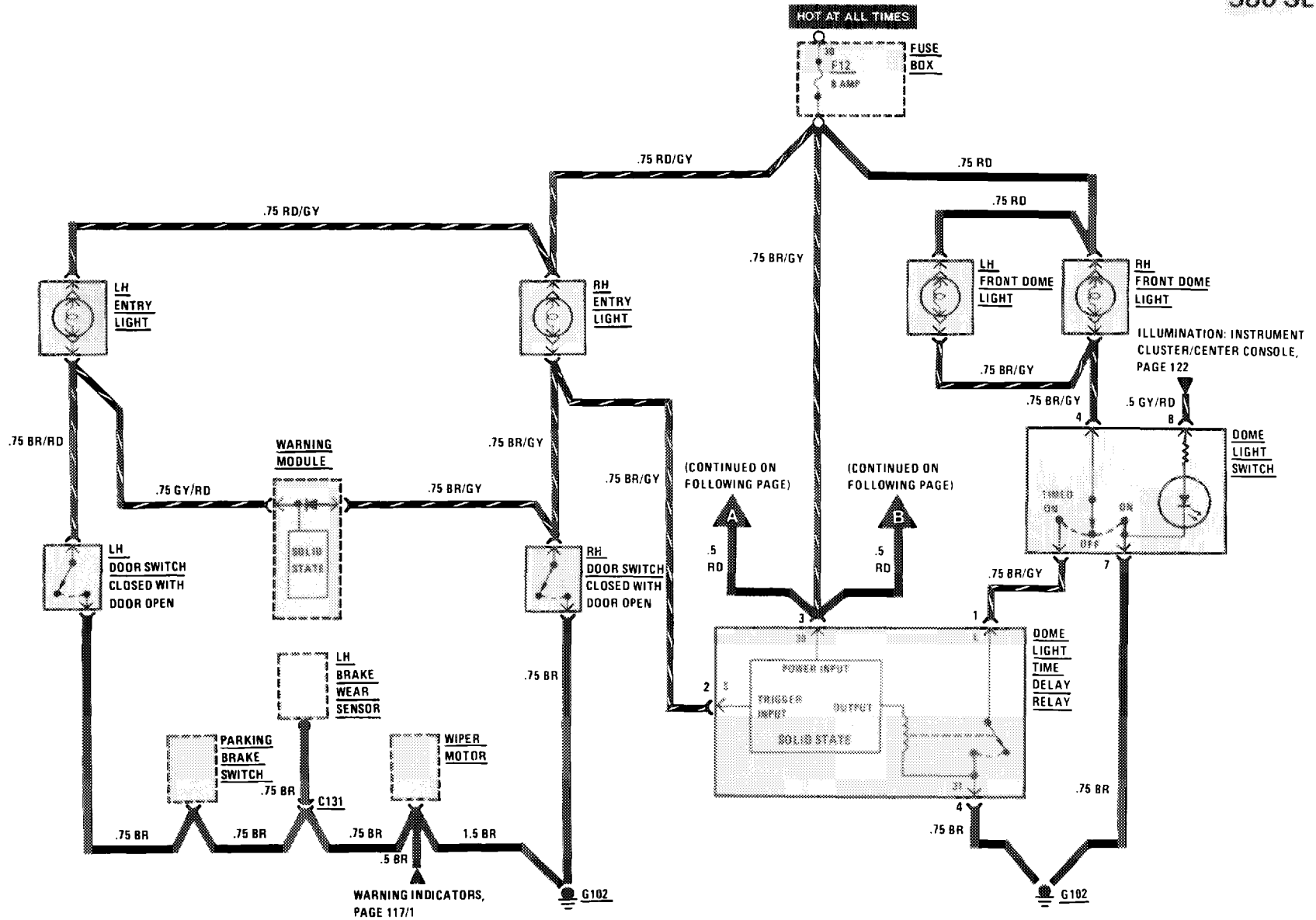
REVISIONS:

# COURTESY LIGHTS

(For Component Locations See Page 204)

MY 1985

380 SL



4:86

107.045

121/2

REVISIONS:

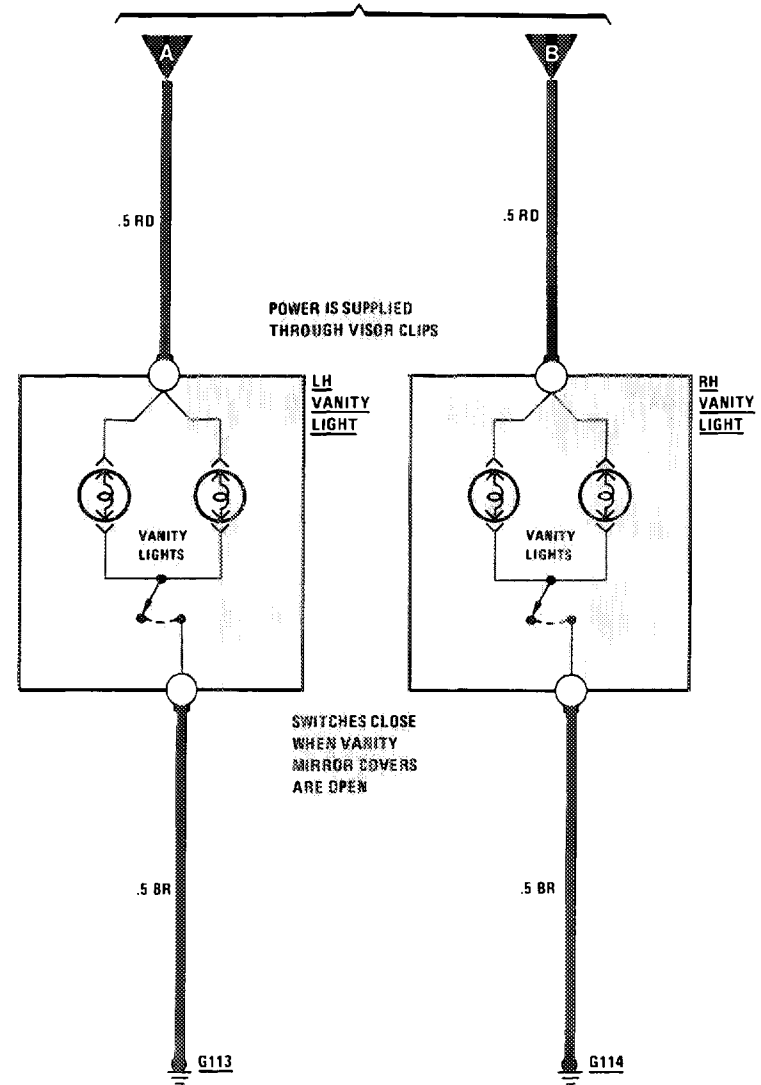
# VANITY LIGHTS

(For Component Locations See Page 204)

MY 1985  
380 SL

121/3

(CONTINUED FROM PRECEDING PAGE)



107.045

REVISIONS:

4/86



THIS PAGE LEFT BLANK INTENTIONALLY

REVISIONS:

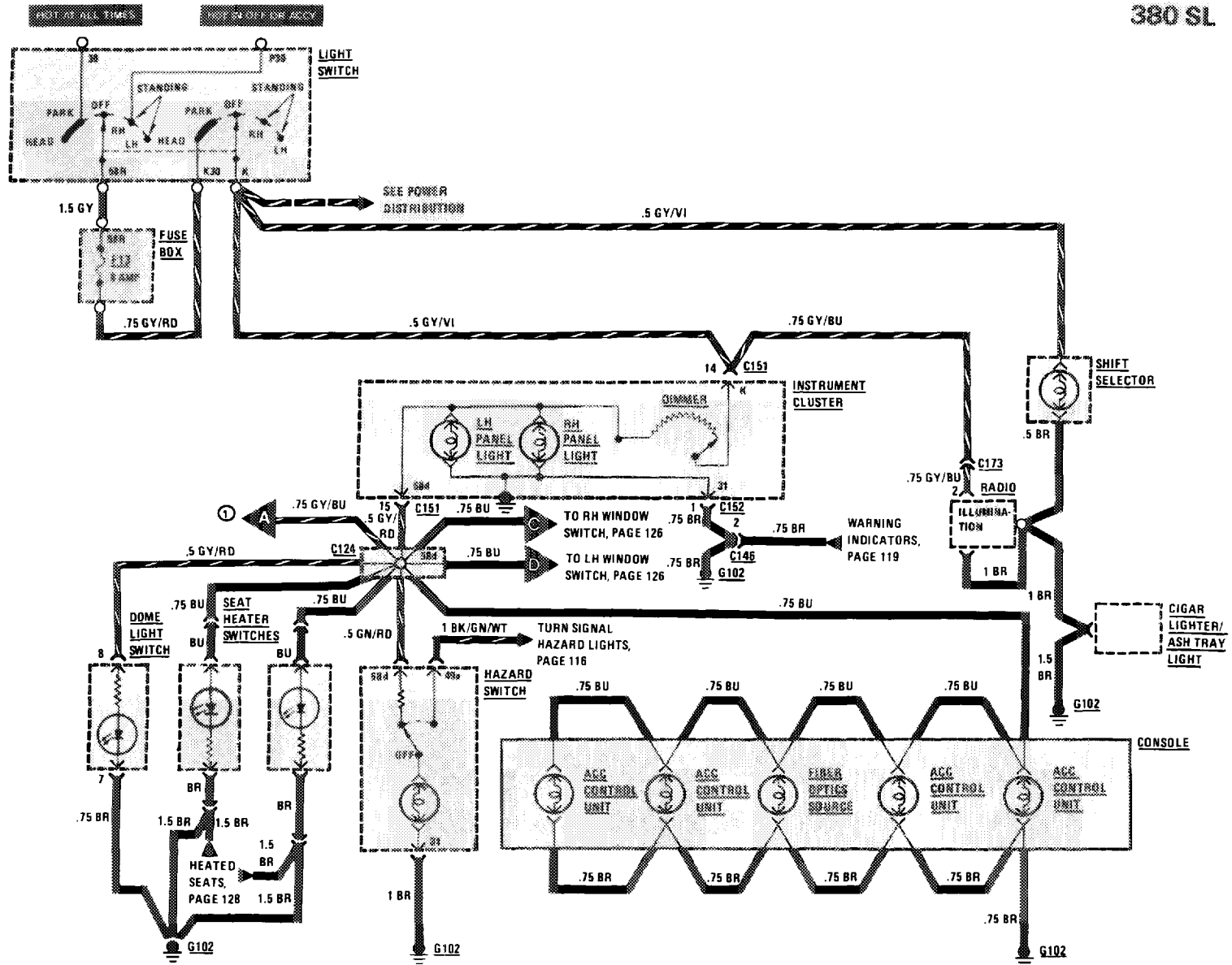
--

# ILLUMINATION: INSTRUMENT CLUSTER/CENTER CONSOLE MY 1983/MY 1984/

(For Component Locations See Page 208)

MY 1985

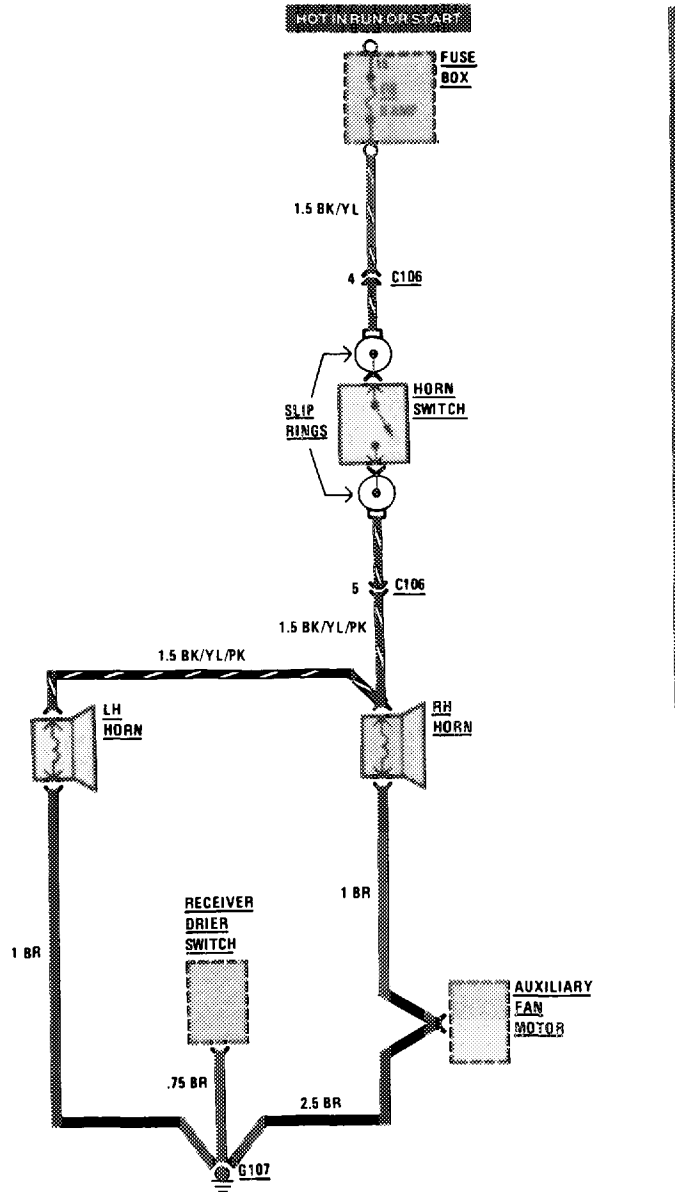
380 SL



REVISIONS: ① MODEL YEARS 1984 AND 1985, PAGE 120

# HORNS

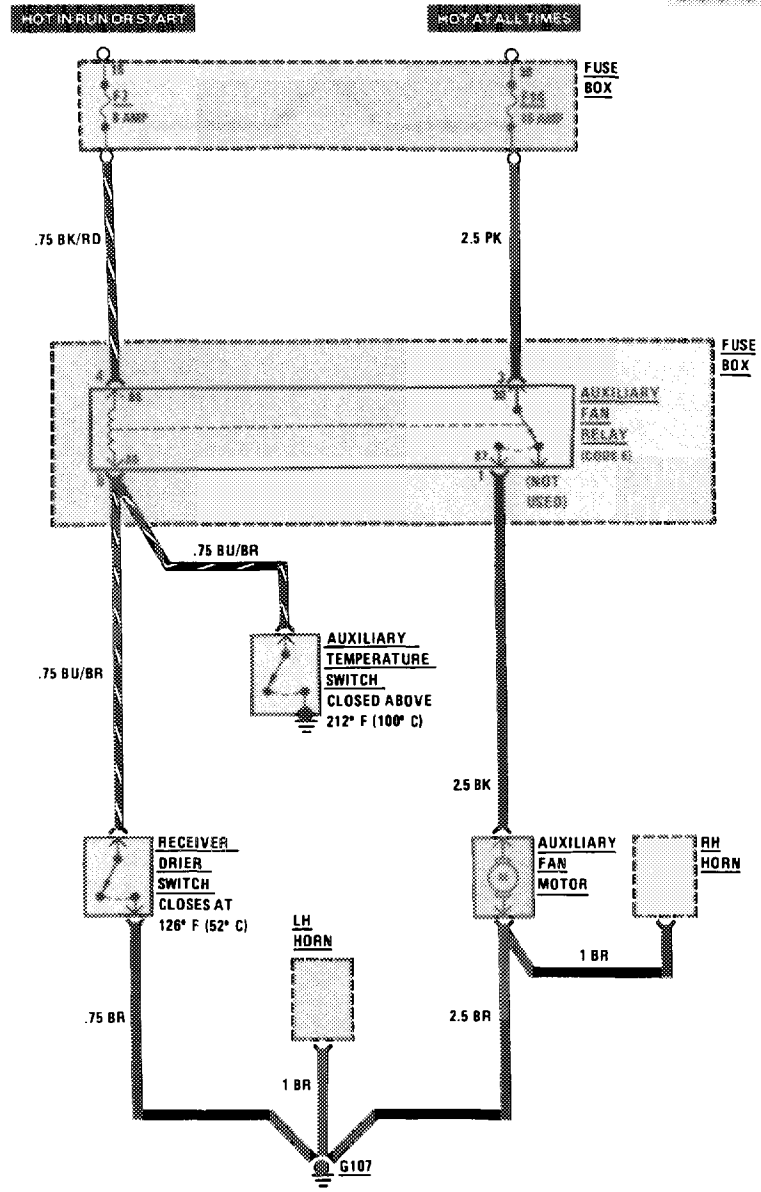
(For Component Locations See Page 206)



# AUXILIARY FAN

MY 1983/MY 1984

380 SL



REVISIONS:

--

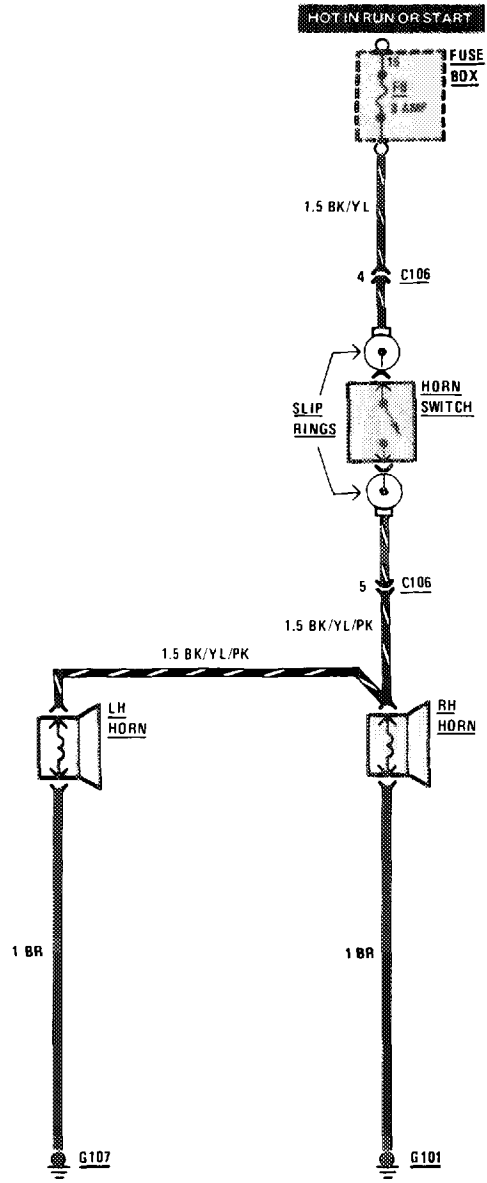
123/1

107.045

4/86

# HORNS

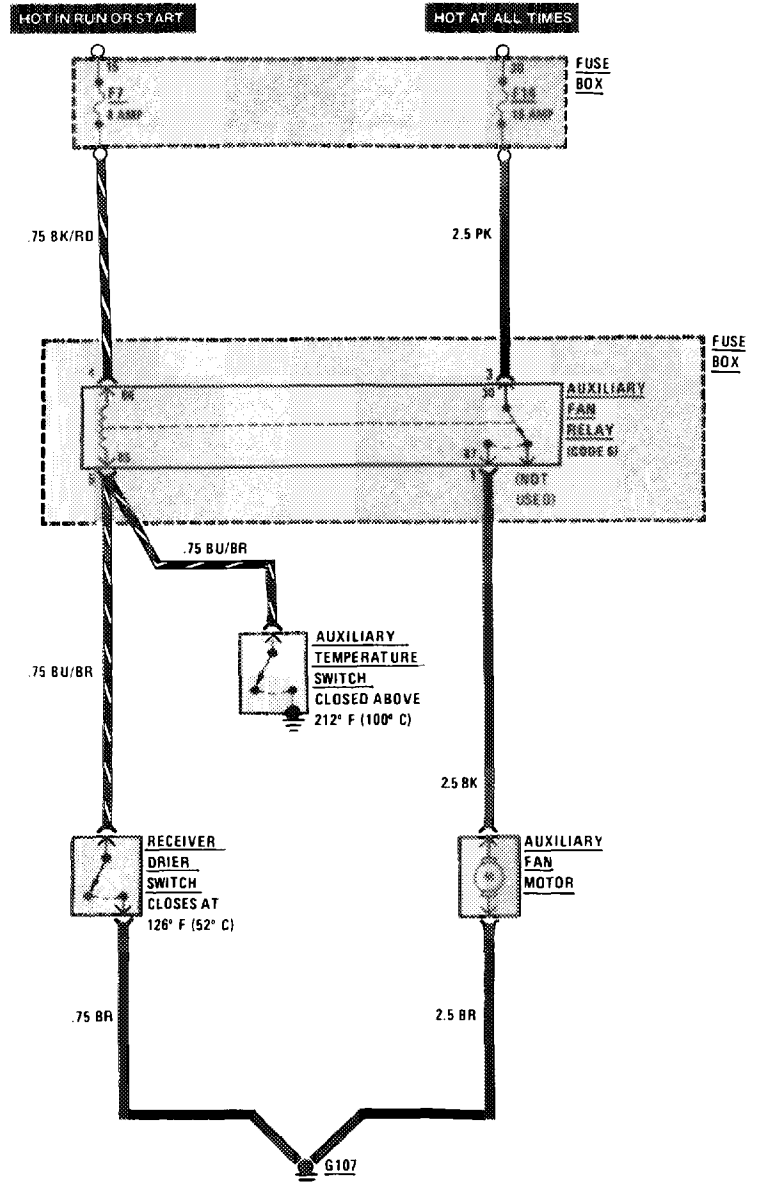
(For Component Locations See Page 206)



# AUXILIARY FAN

MY 1985

380 SL



REVISIONS:

THIS PAGE LEFT BLANK INTENTIONALLY

REVISIONS:

--

# WIPER/WASHER

(For Component Locations See Page 213)

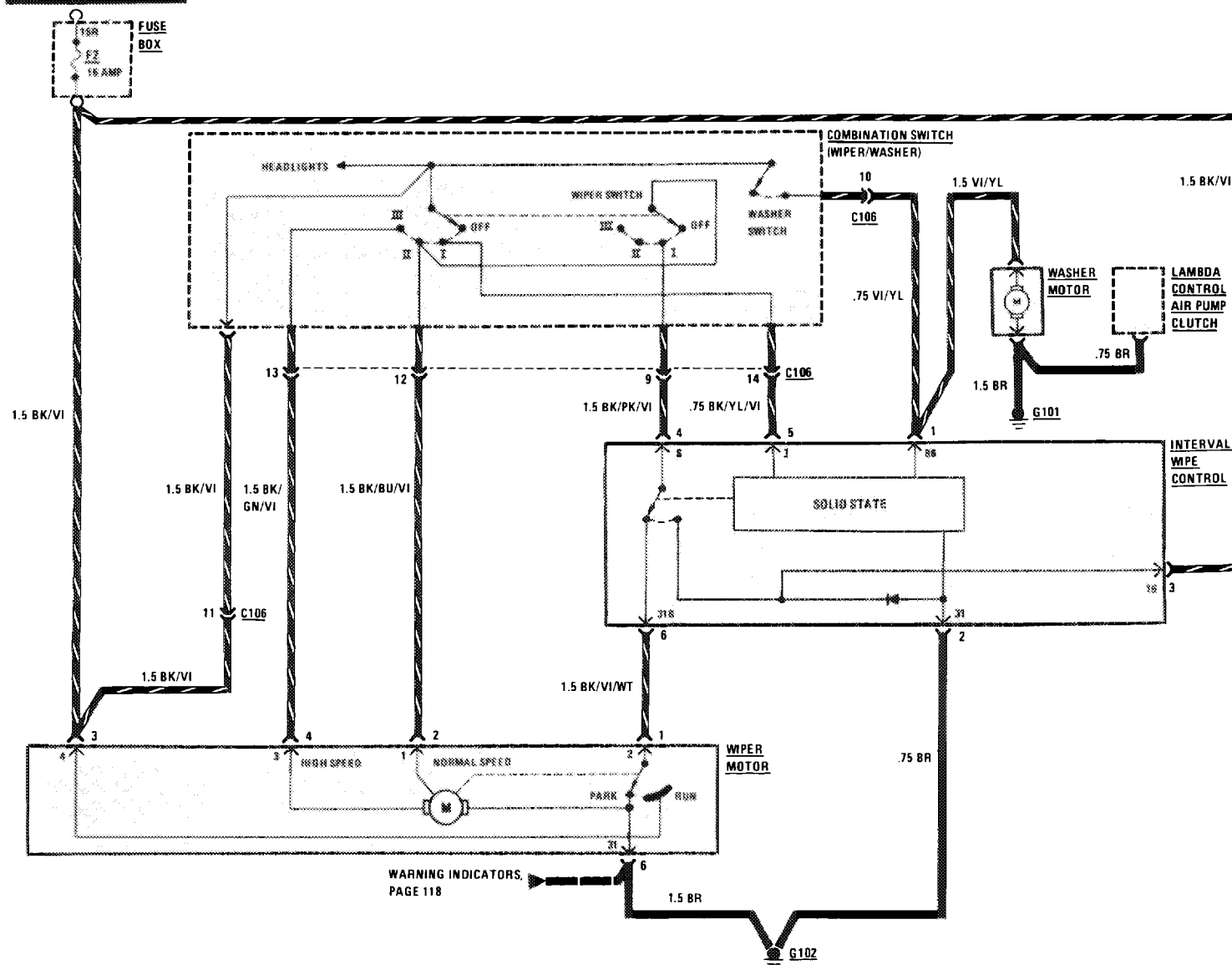
MY 1983/MY 1984/MY 1985

380 SL

124

107.045

HOT IN ACCY. RUN OR START



REVISIONS:

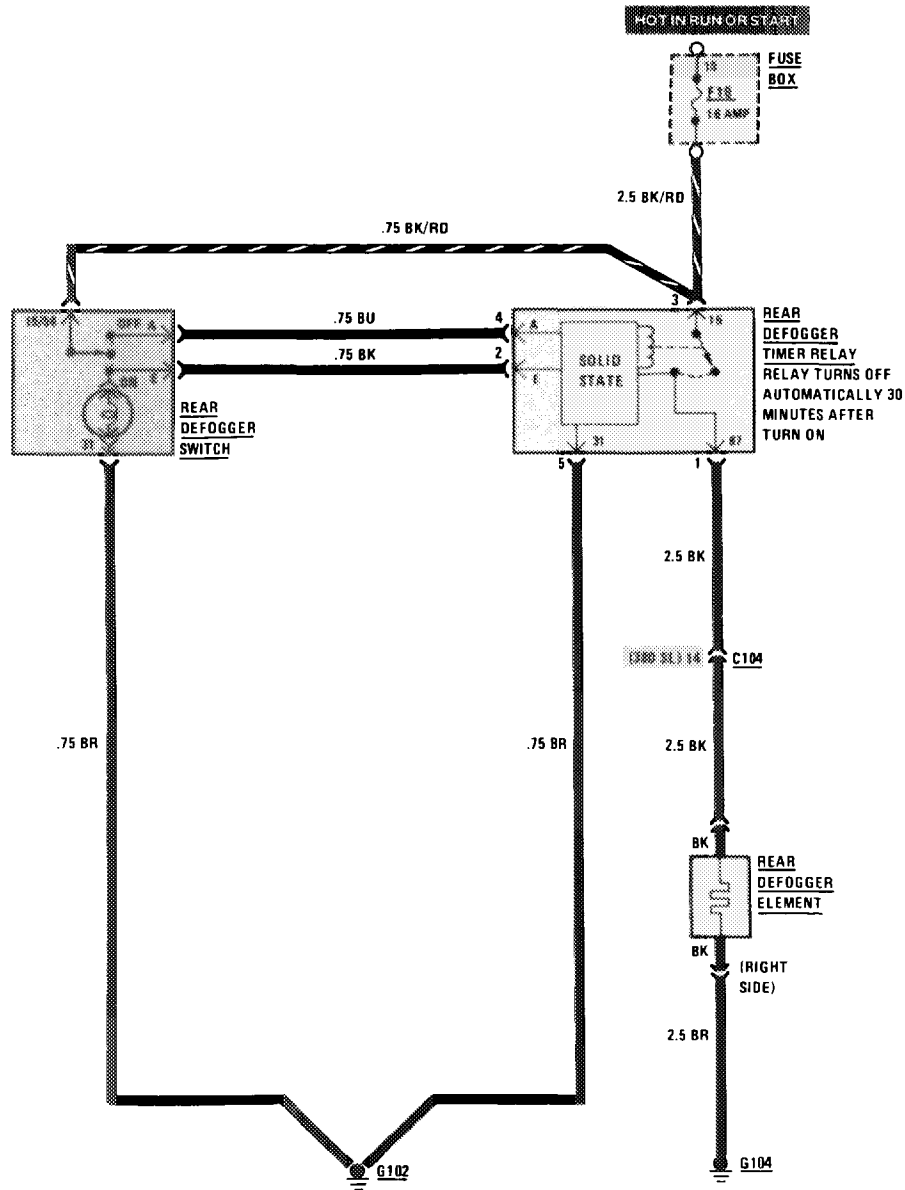
1/87

# REAR DEFOGGER

(For Component Locations See Page 210)

MY 1983 - MY 1985

380SL



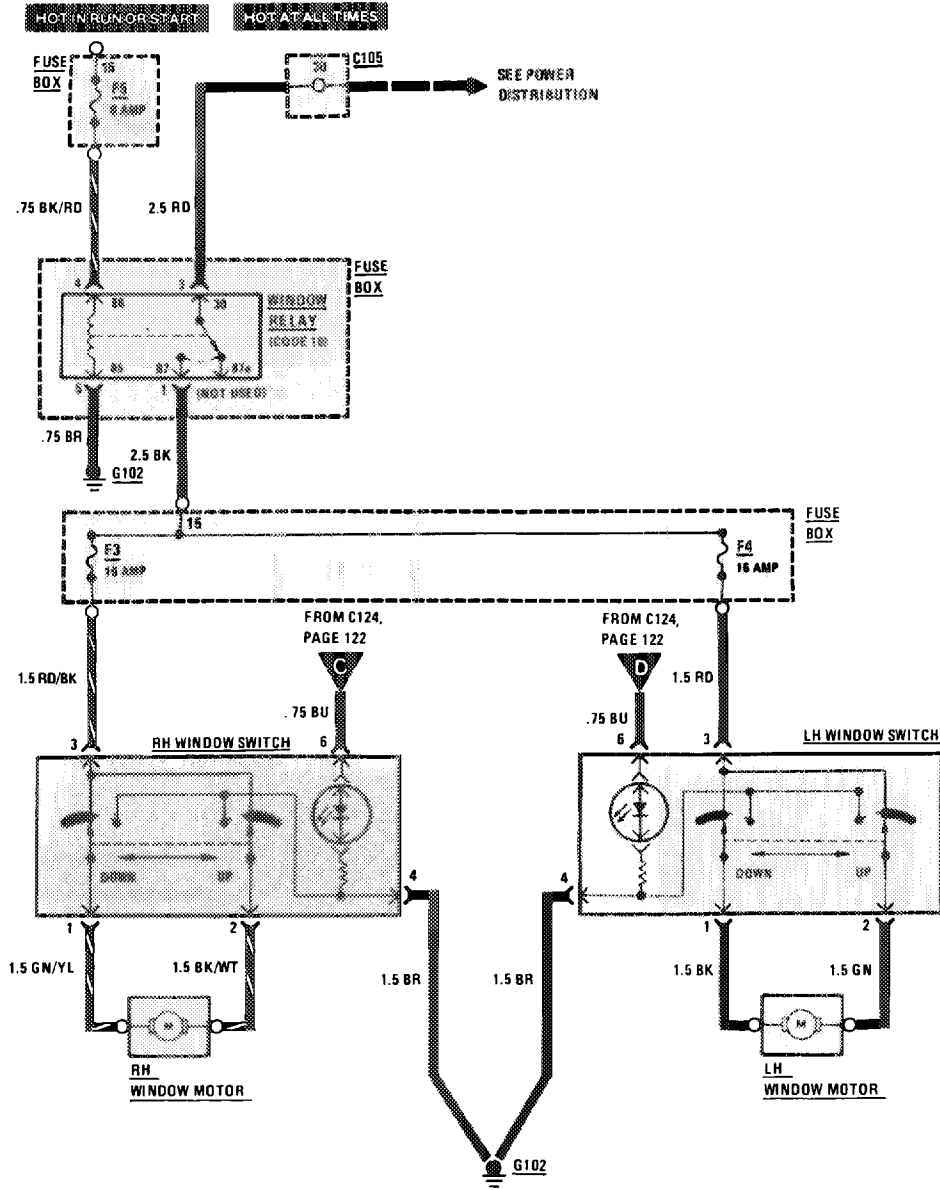
REVISIONS:

# POWER WINDOWS

(For Component Locations See Page 210)

MY 1983 - MY 1985

380SL



126

107.045

REVISIONS:

1/87

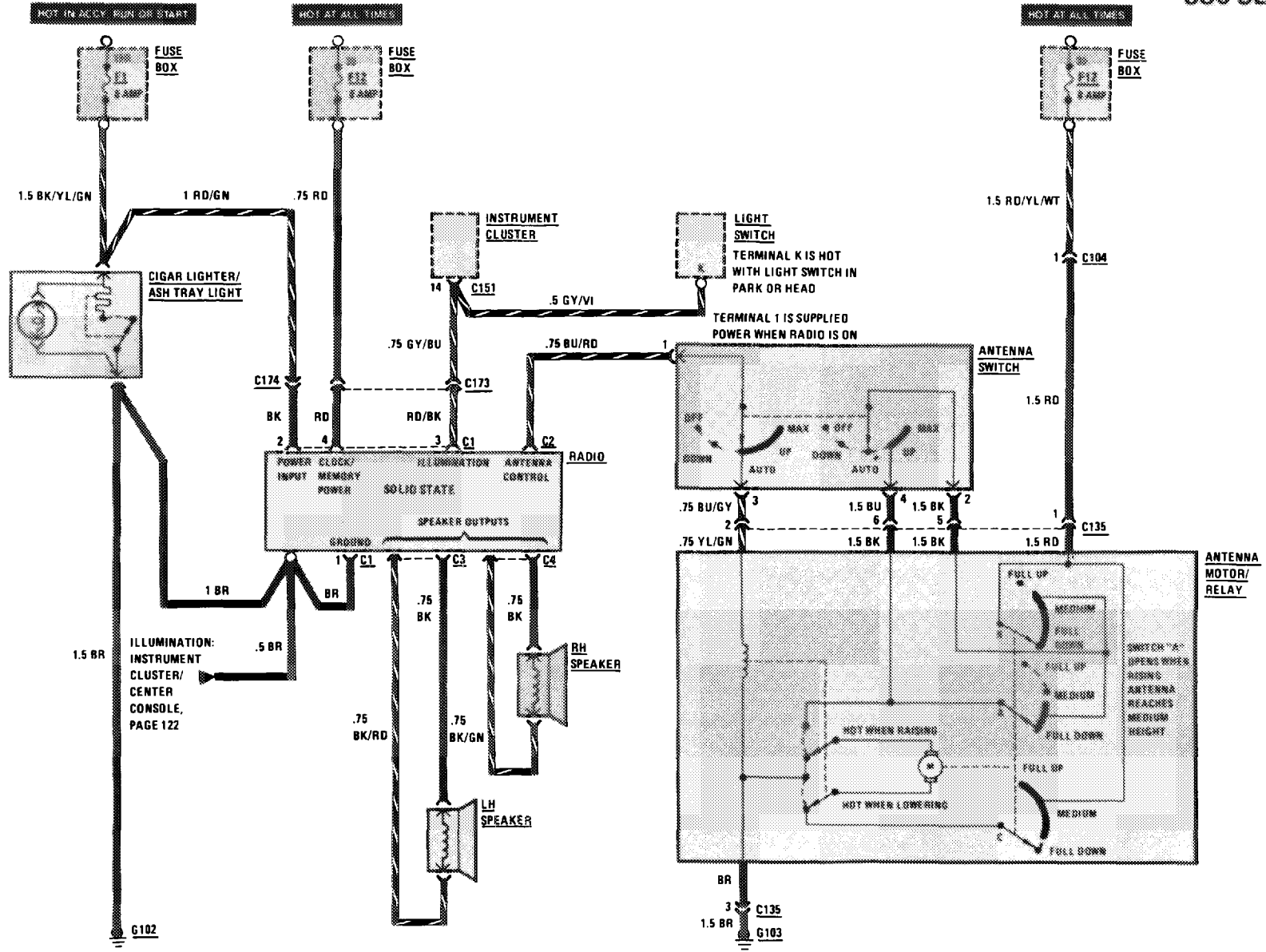


# CIGAR LIGHTER/RADIO/AUTOMATIC ANTENNA

(For Component Locations See Page 204)

MY 1983

380 SL



1/87

107.045

127

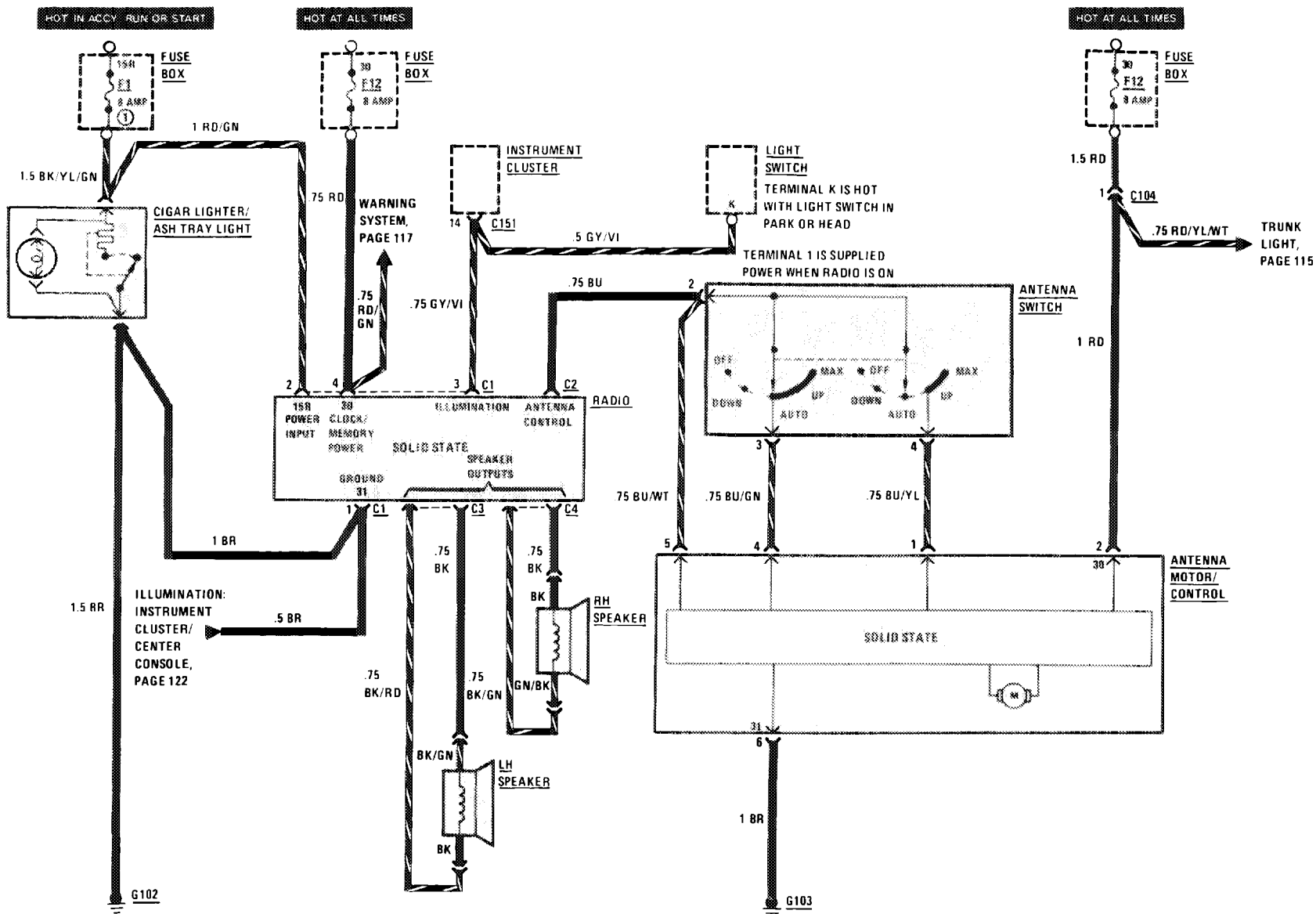
REVISIONS:

# CIGAR LIGHTER/RADIO/AUTOMATIC ANTENNA

(For Component Locations See Page 204)

MY 1984

380 SL



REVISIONS: ① 16 AMP (WHEN EQUIPPED WITH HEATED SEATS)

127/1

107.045

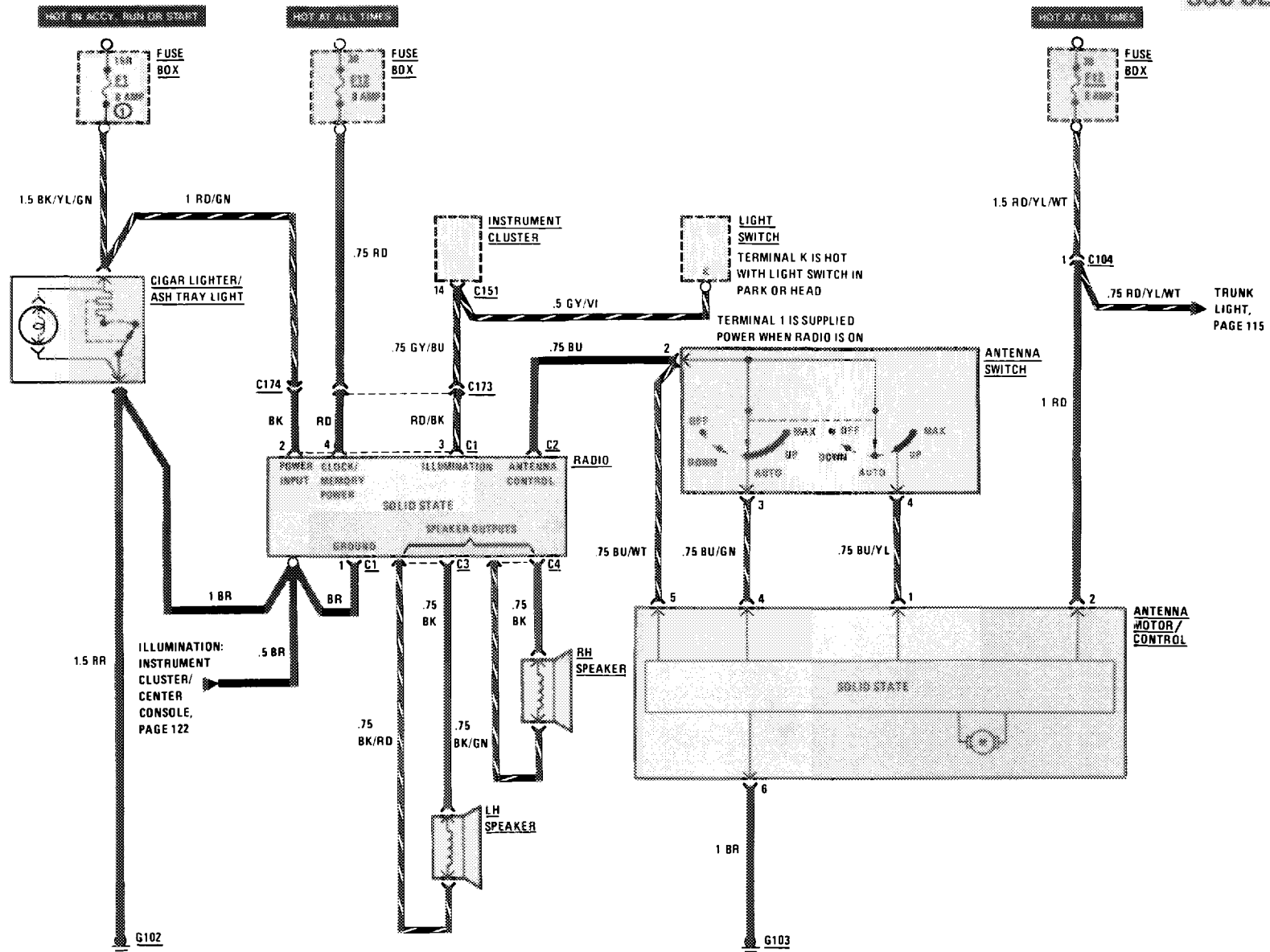
4:86

# CIGAR LIGHTER/RADIO/AUTOMATIC ANTENNA

(For Component Locations See Page 204)

MY 1985

380 SL



REVISIONS: ① 16 AMP (WHEN EQUIPPED WITH HEATED SEATS)

1/87

107.045

127/2

THIS PAGE LEFT BLANK INTENTIONALLY

REVISIONS:

THIS PAGE LEFT BLANK INTENTIONALLY

127/4

REVISIONS:

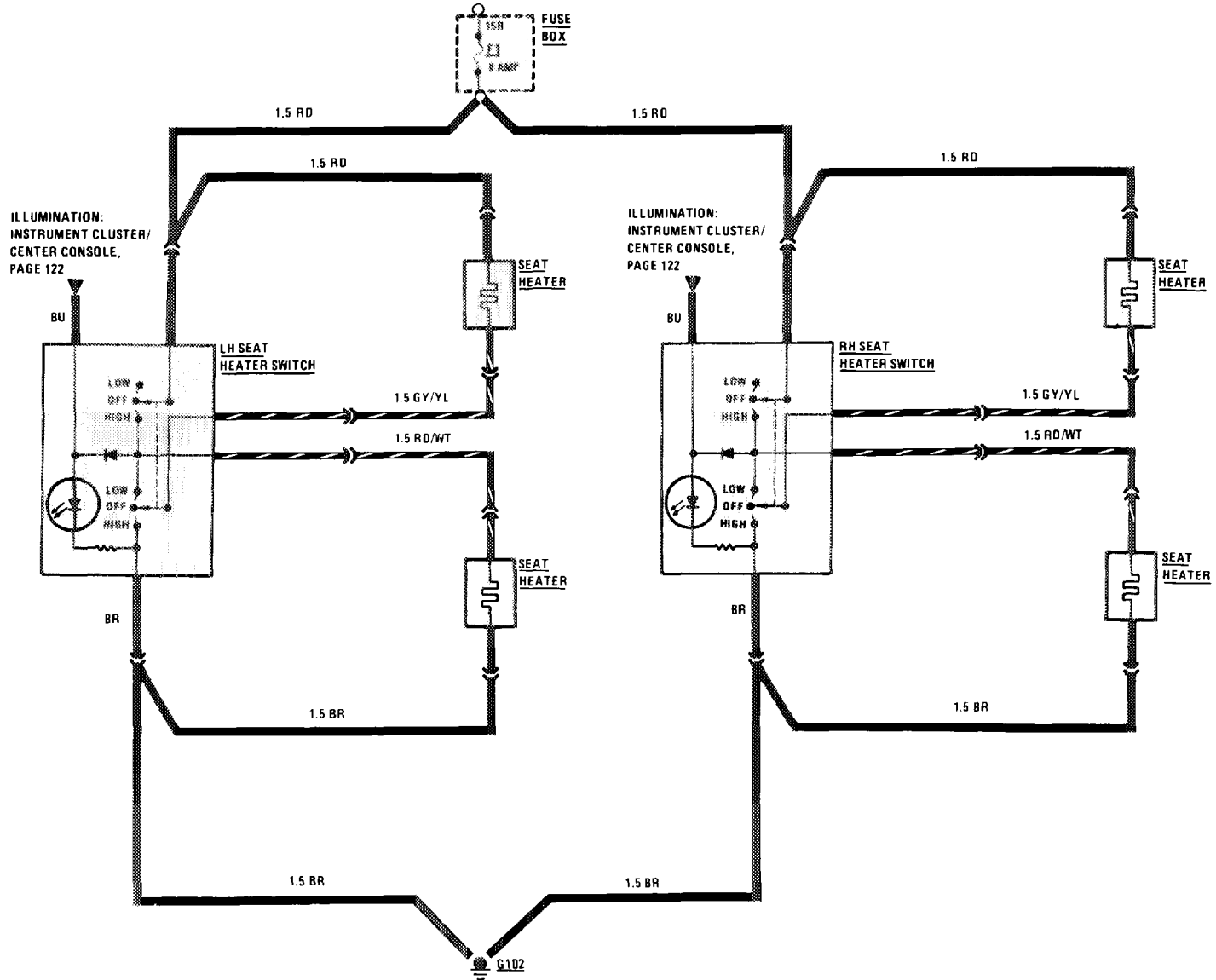
--

# HEATED SEATS

(For Component Locations See Page 206)

MY 1983  
380 SL

HRT IN 42CY BRN ON START



REVISIONS:

128

107.045

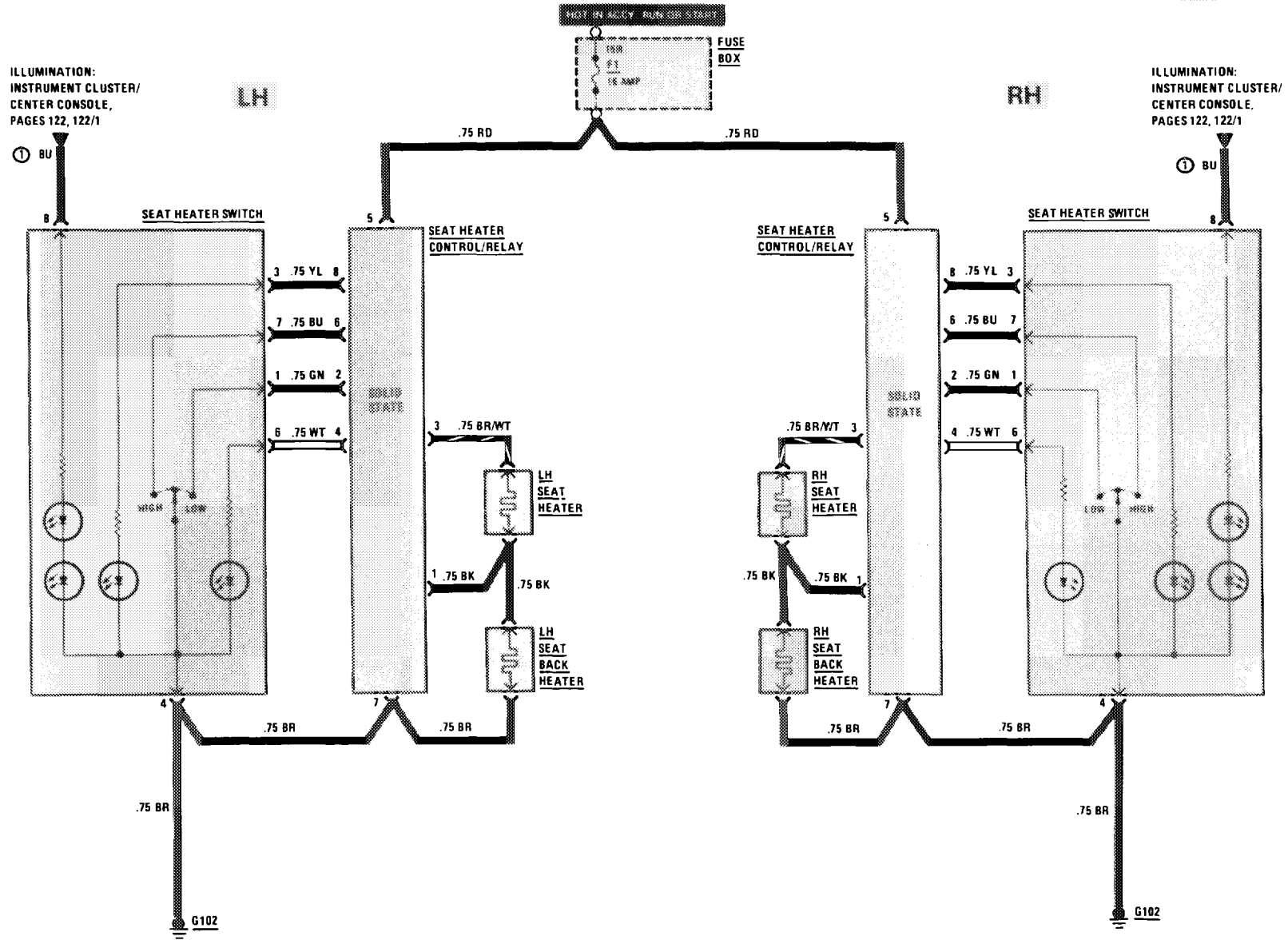
4/86

# HEATED SEATS

(For Component Locations See Page 206)

MY 1984 - MY 1985

380SL



ILLUMINATION:  
INSTRUMENT CLUSTER/  
CENTER CONSOLE,  
PAGES 122, 122/1

ILLUMINATION:  
INSTRUMENT CLUSTER/  
CENTER CONSOLE,  
PAGES 122, 122/1

107.045

REVISIONS: ① MODEL YEARS 1984 AND 1985

128/1

THIS PAGE LEFT BLANK INTENTIONALLY

REVISIONS:

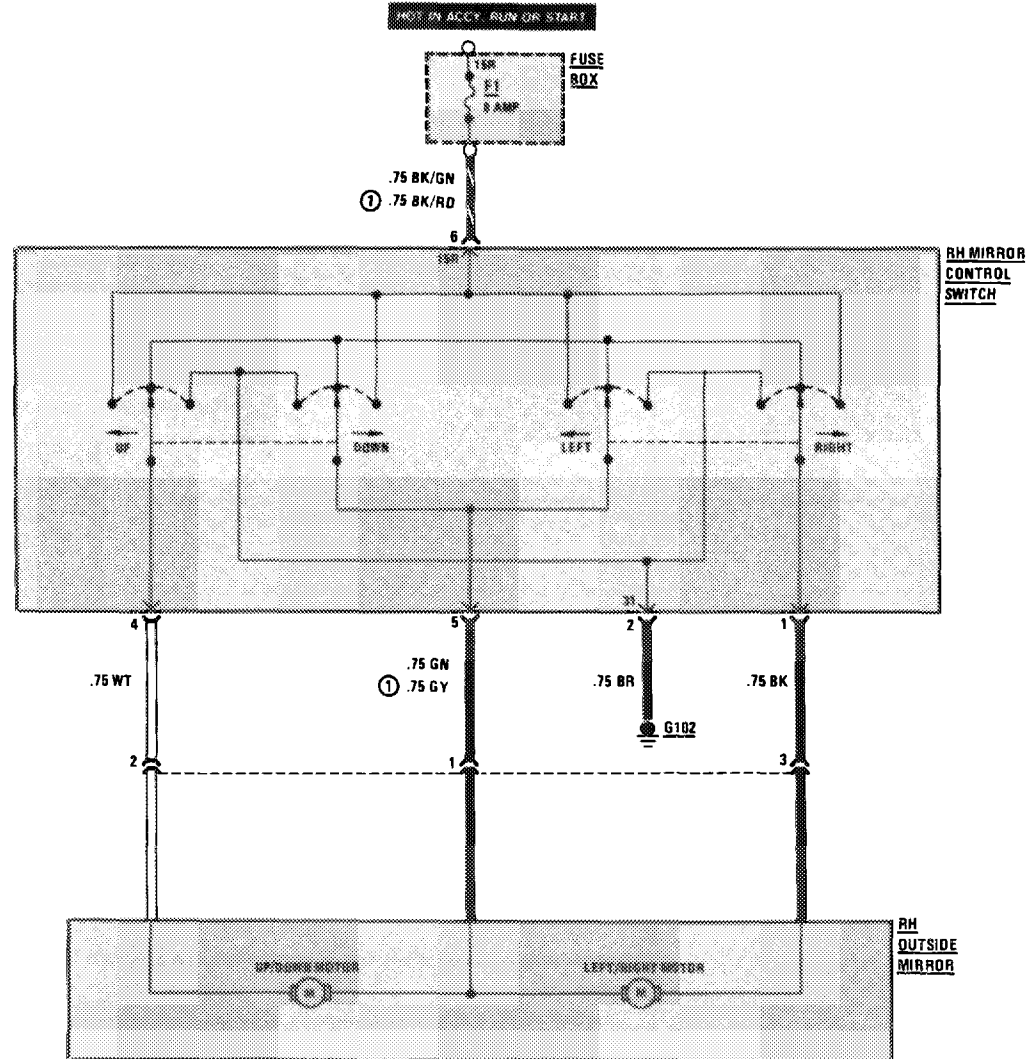


# RH OUTSIDE MIRROR

(For Component Locations See Page 210)

MY 1983/MY 1984/MY 1985

380 SL



107.045

REVISIONS: ① AS OF MODEL YEAR 1985

# OUTSIDE HEATED MIRRORS

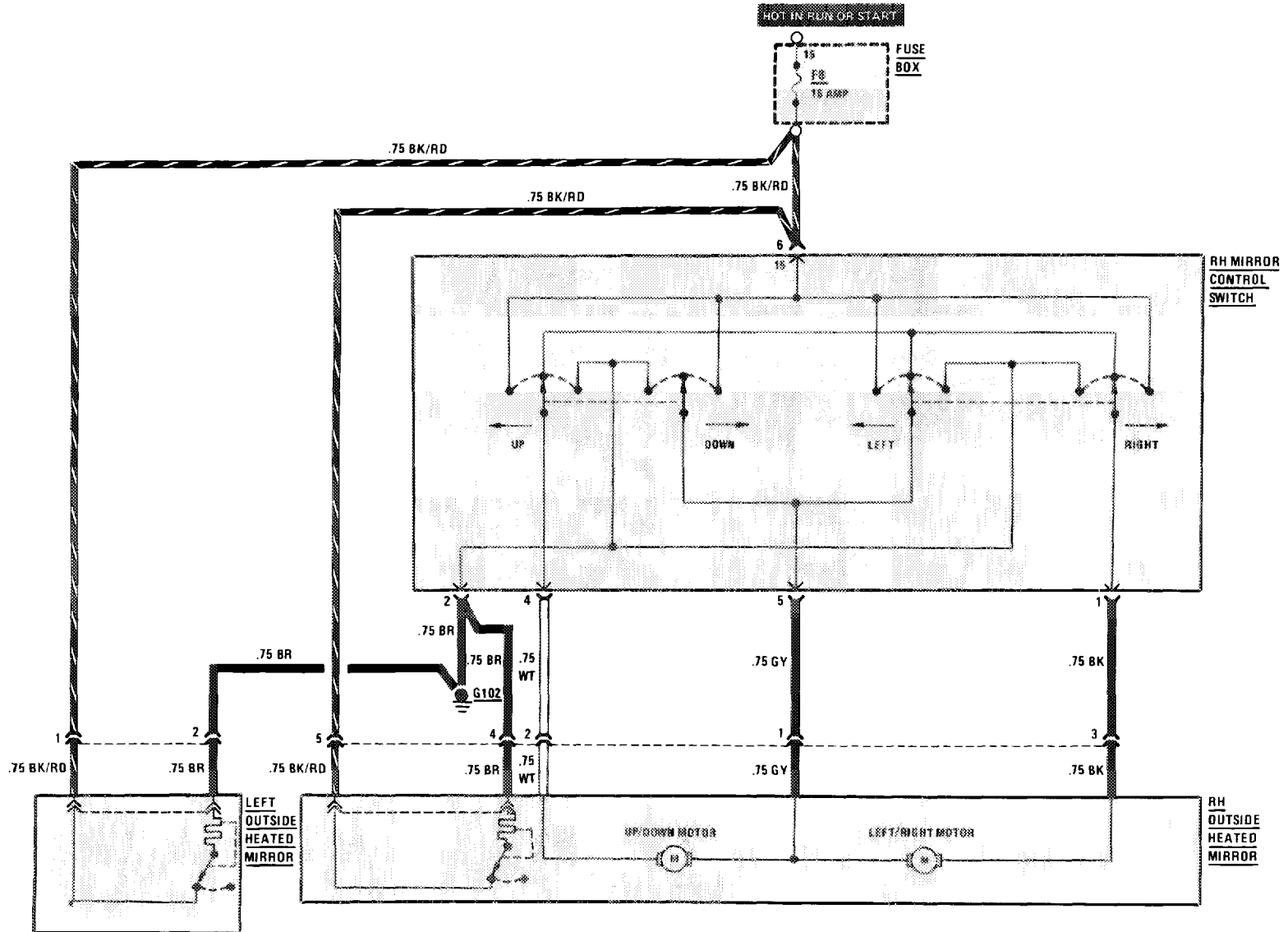
(For Component Locations See Page 209)

MY 1985

380SL

130

107.045



REVISIONS:

1/87

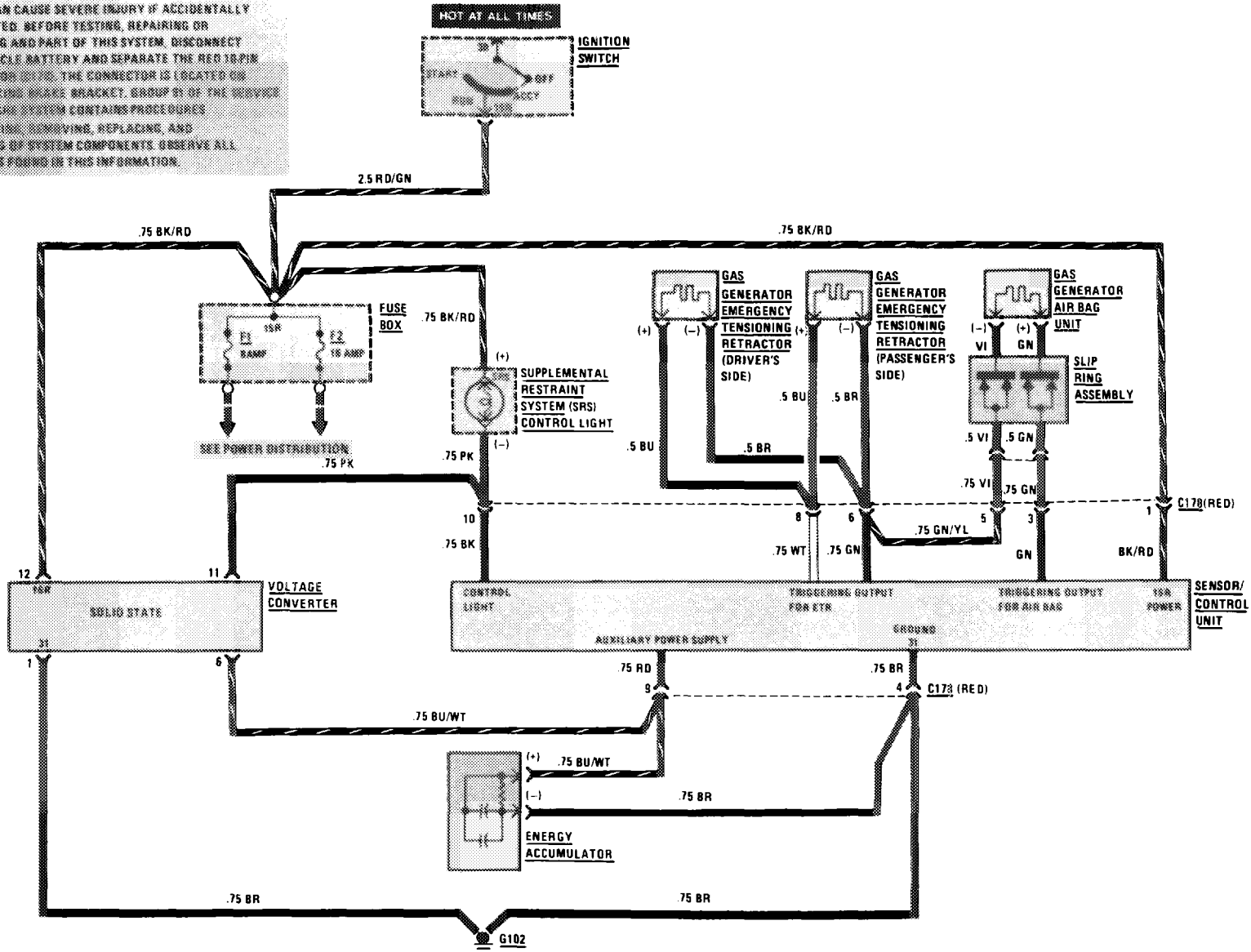
# SUPPLEMENTAL RESTRAINT SYSTEM (SRS) (WITH AIR BAG)

(For Component Locations See Page 211)

MY 1985

380SL

**WARNING:**  
 GAS GENERATORS ARE 11 PYROTECHNIC DEVICES, WHICH CAN CAUSE SEVERE INJURY IF ACCIDENTALLY DETONATED. BEFORE TESTING, REPAIRING OR HANDLING ANY PART OF THIS SYSTEM, DISCONNECT THE VEHICLE BATTERY AND SEPARATE THE RED 10 PIN CONNECTOR (C170). THE CONNECTOR IS LOCATED ON THE PARKING BRACKET BRACKET GROUP 01 OF THE SERVICE MICROPHONE SYSTEM CONTAINS PROCEDURES FOR TESTING, SERVICING, REPLACING, AND DISPOSING OF SYSTEM COMPONENTS. OBSERVE ALL CAUTIONS FOUND IN THIS INFORMATION.

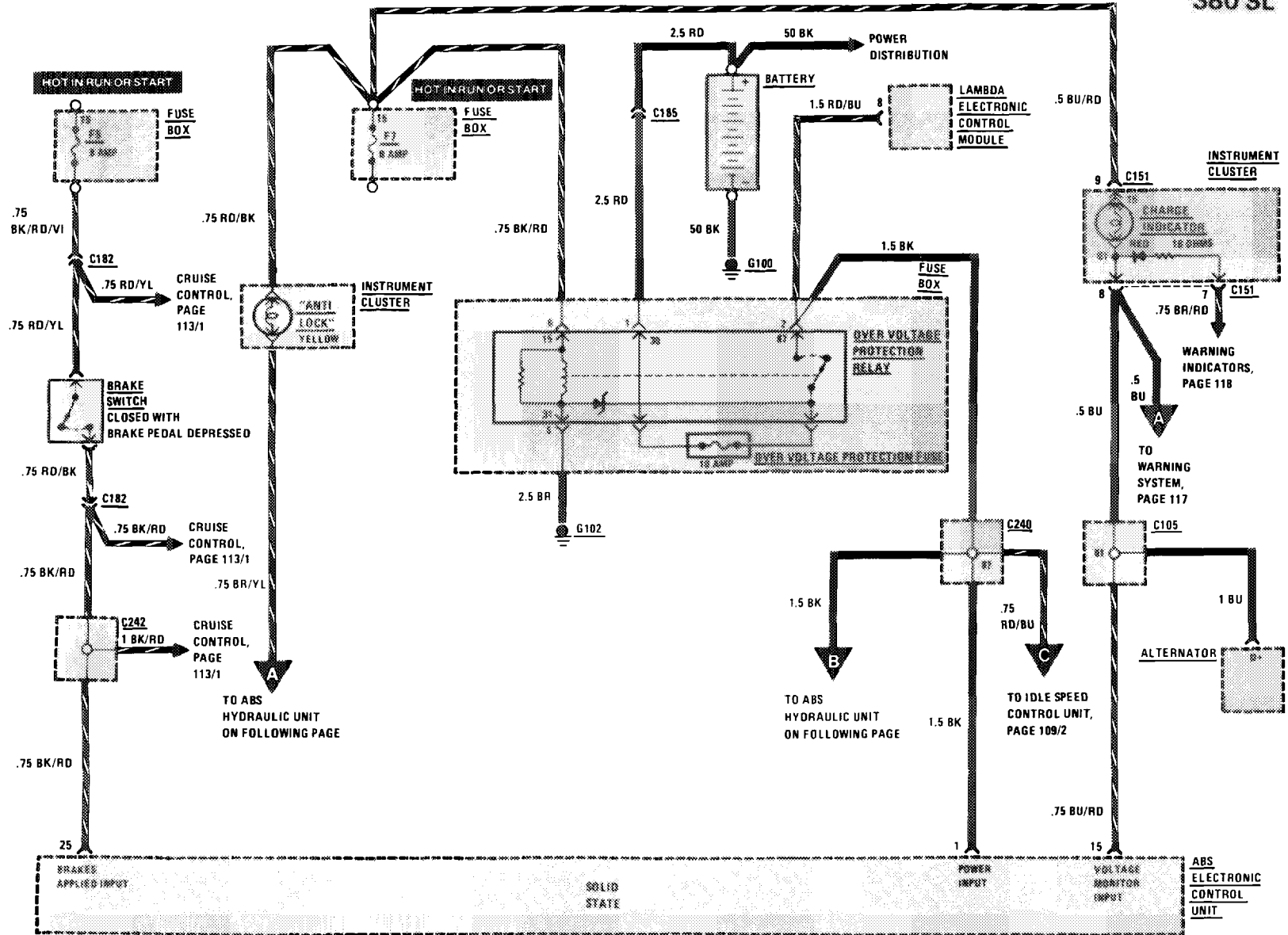


107.045

REVISIONS:

# ANTILOCK BRAKE SYSTEM

(For Component Locations See Page 201)



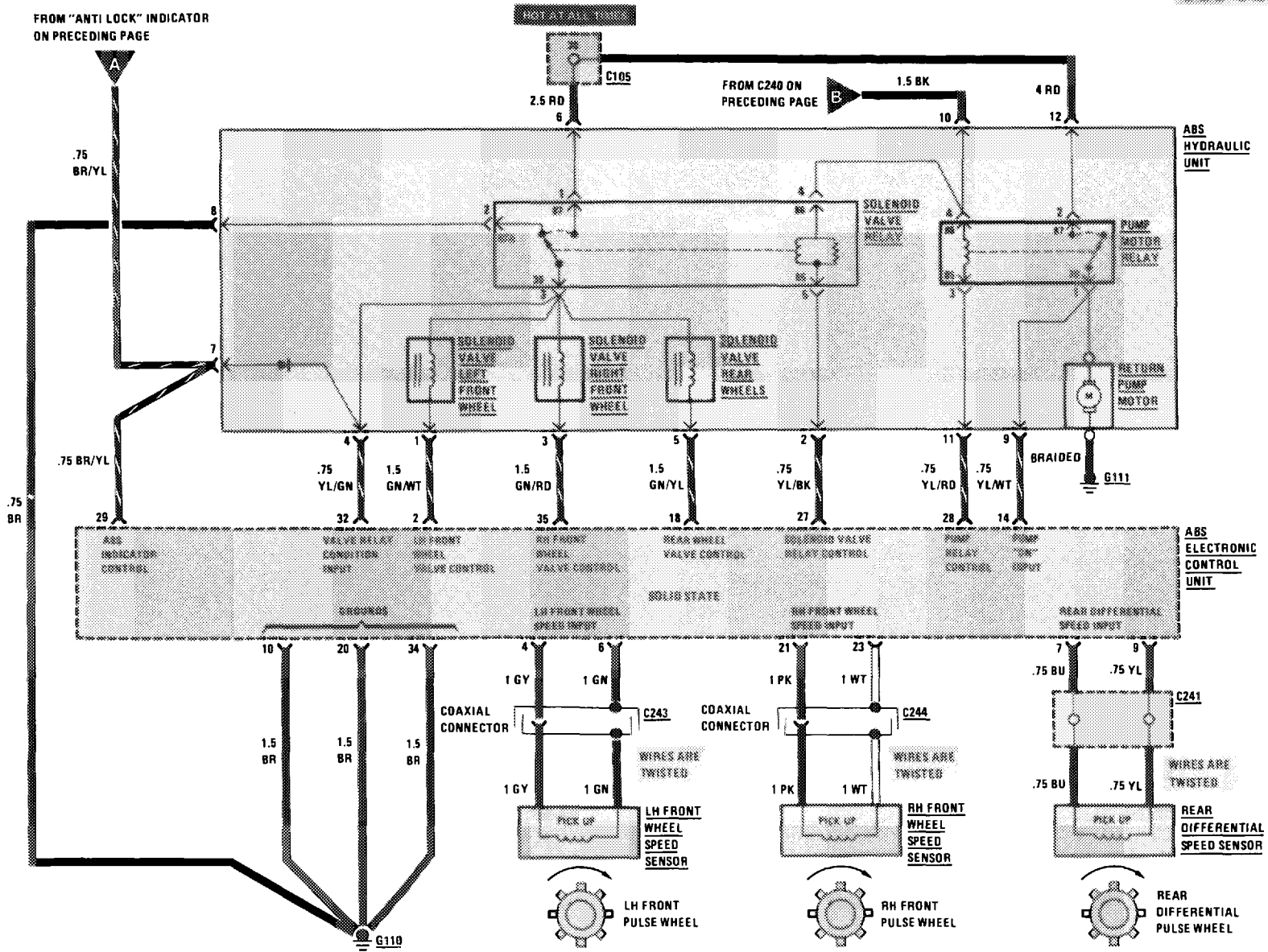
REVISIONS:

# ANTILOCK BRAKE SYSTEM

(For Component Locations See Page 201)

MY 1985

300 SL



REVISIONS:

THIS PAGE LEFT BLANK INTENTIONALLY

REVISIONS:

--

THIS PAGE LEFT BLANK INTENTIONALLY

REVISIONS:

--

THIS PAGE LEFT BLANK INTENTIONALLY

REVISIONS:



THIS PAGE LEFT BLANK INTENTIONALLY

REVISIONS:

--

THIS PAGE LEFT BLANK INTENTIONALLY

REVISIONS:

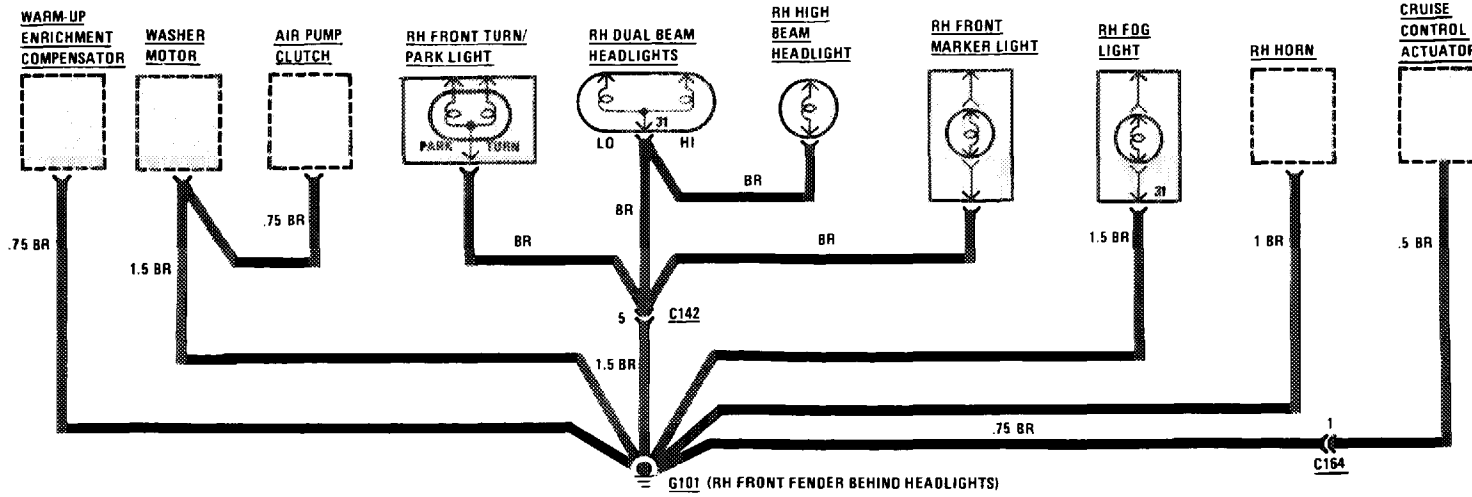
THIS PAGE LEFT BLANK INTENTIONALLY

REVISIONS:

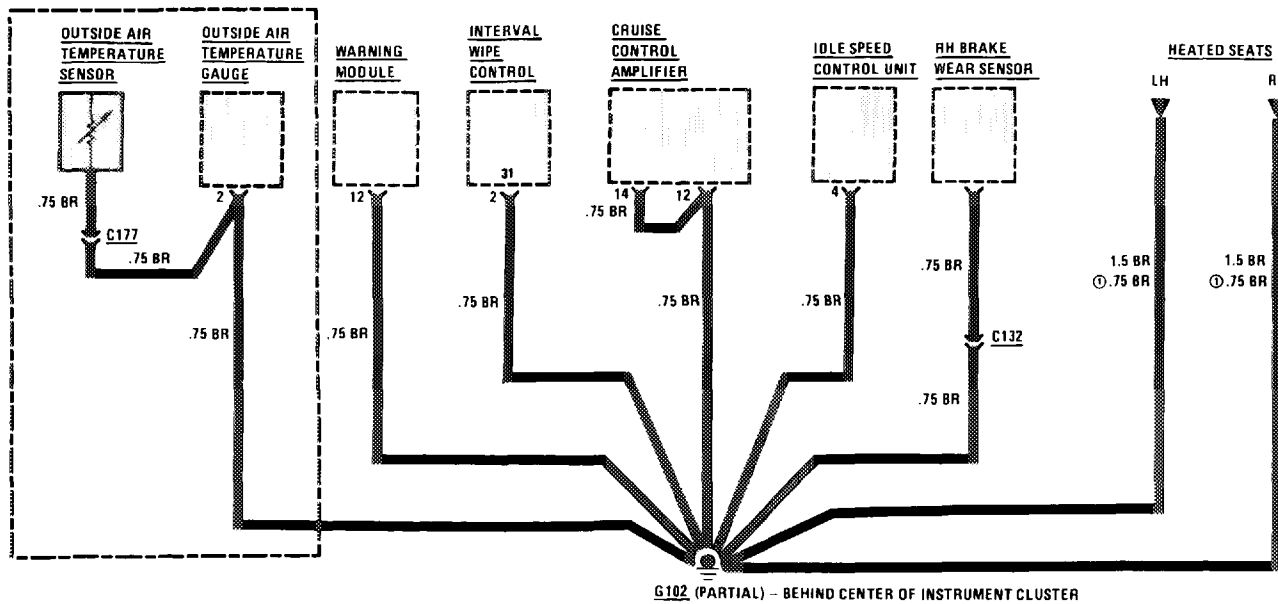
# GROUND DISTRIBUTION

MY 1983/MY 1984/MY 1985

380 SL



AS OF MY 1984



REVISIONS: Ⓞ AS OF MODEL YEAR 1984

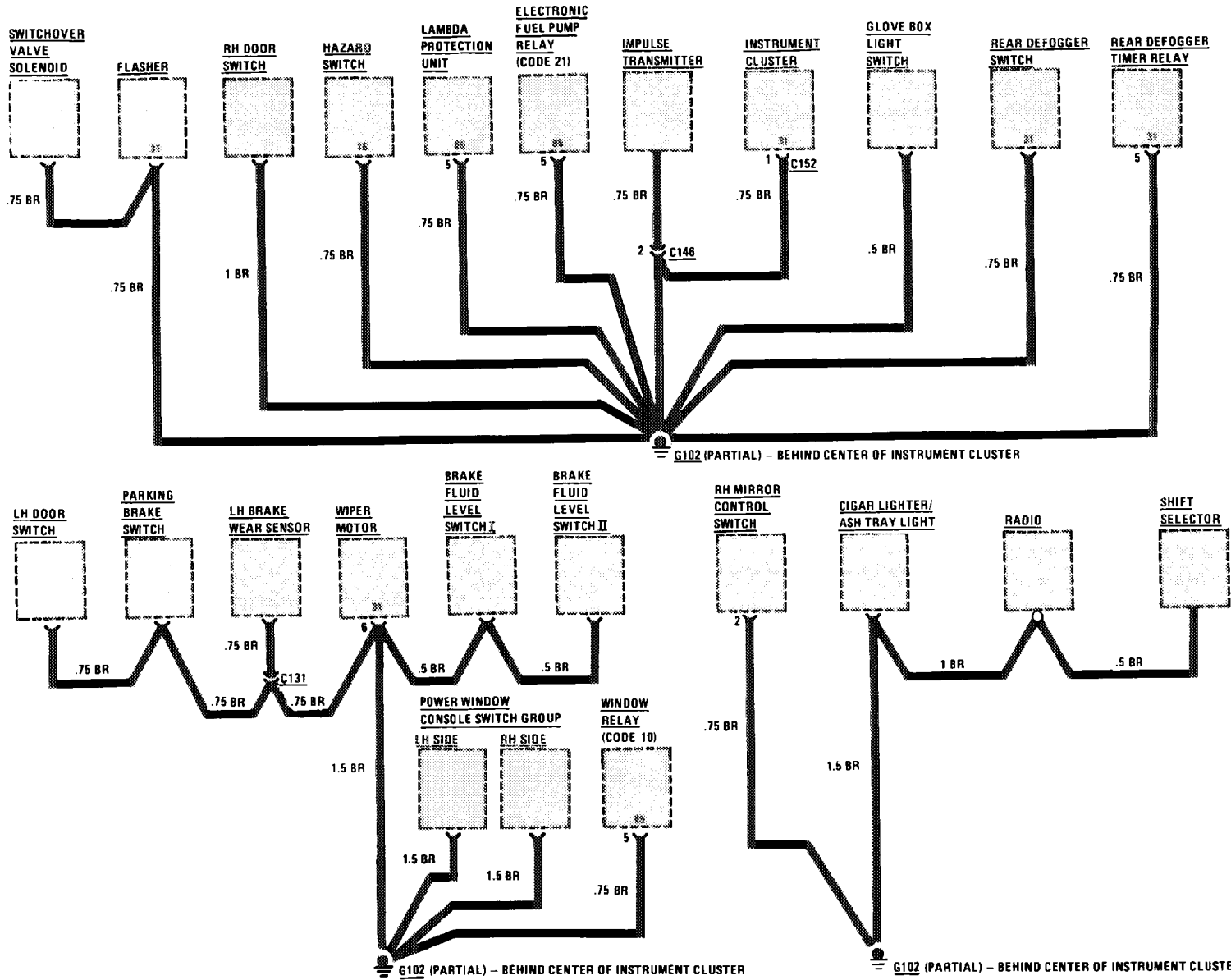
138

107.045

1/87

# GROUND DISTRIBUTION

MY 1983/MY 1984/MY 1985  
380 SL

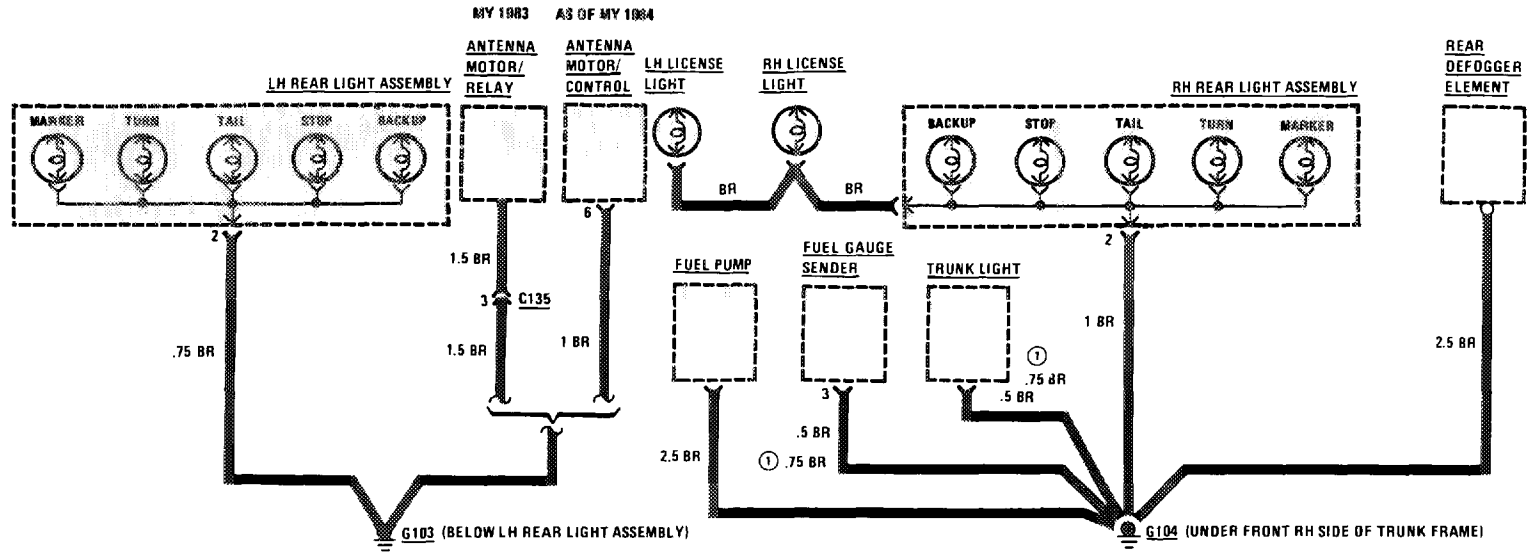


107.045

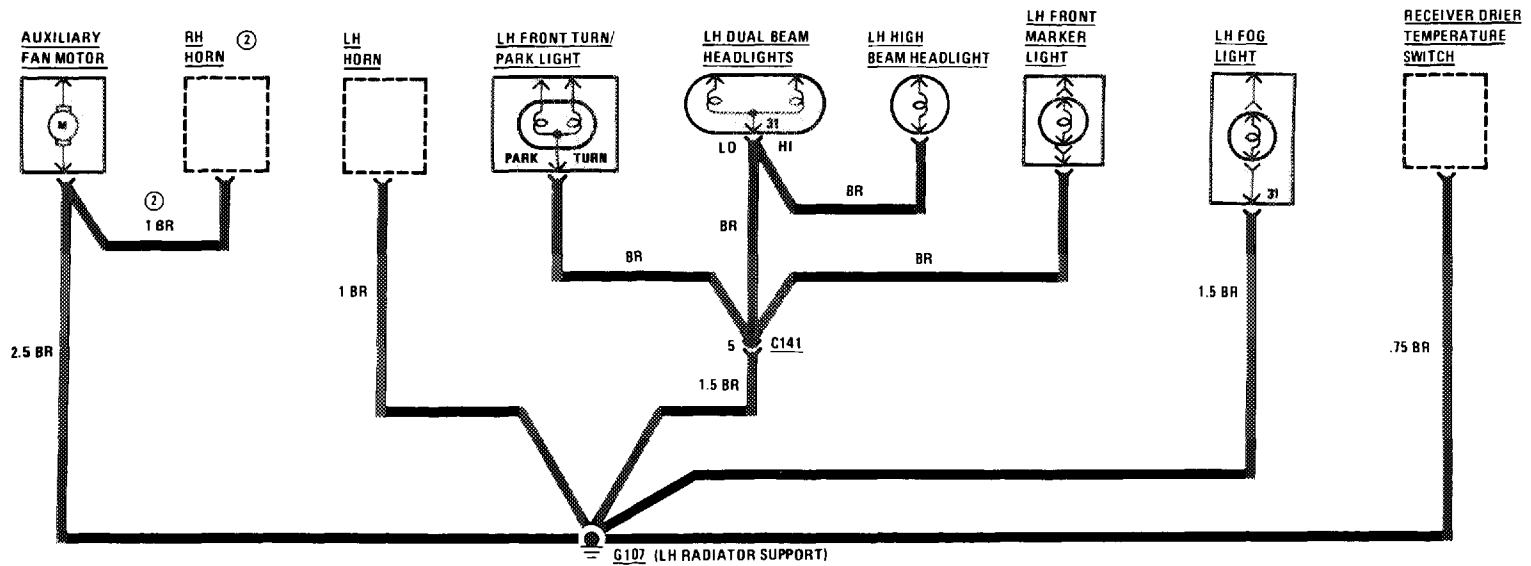
REVISIONS:

--

140



107 045



REVISIONS: ① AS OF MODEL YEAR 1984  
 ② AS OF MODEL YEAR 1985

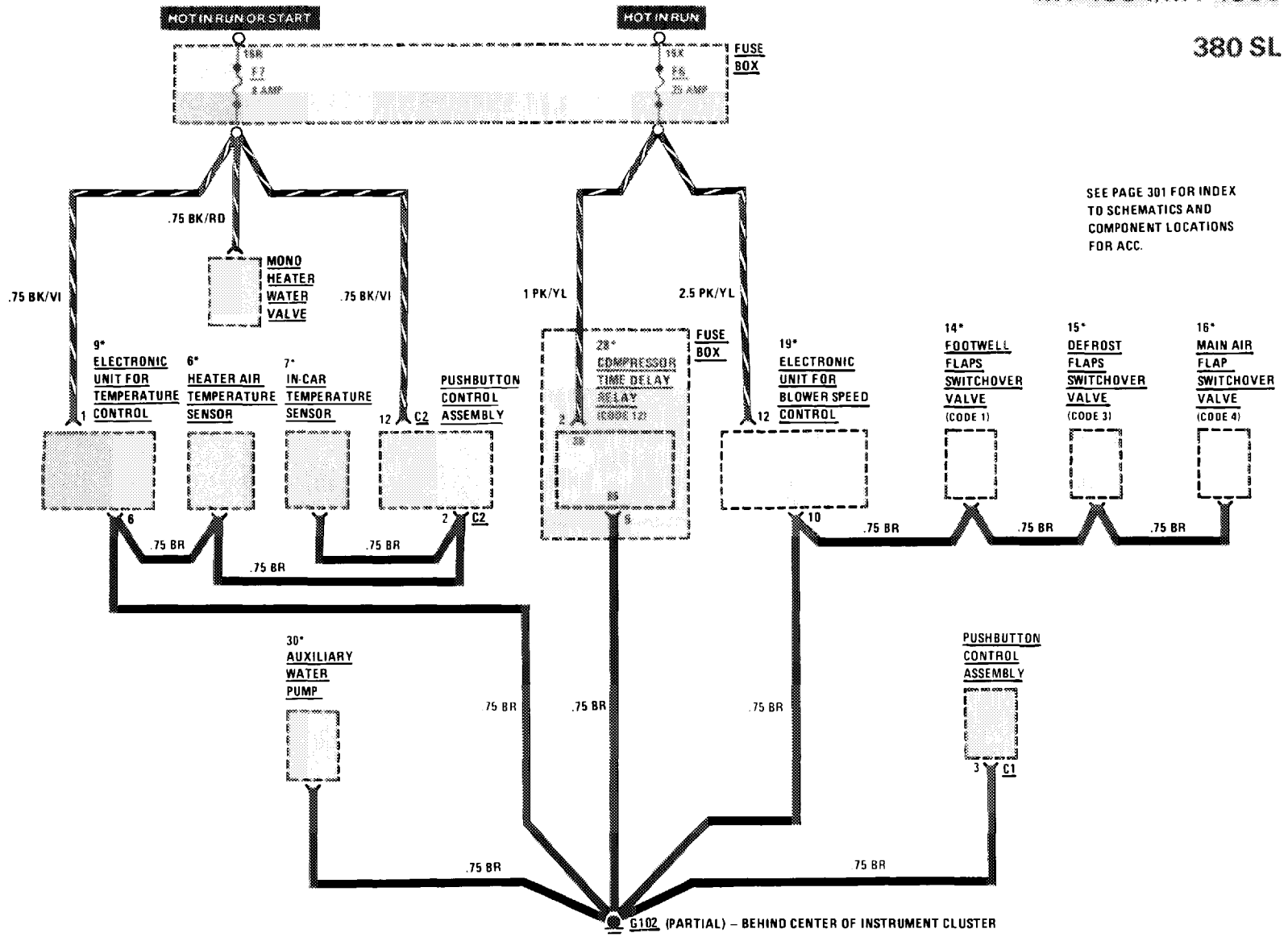
4.86

# AUTOMATIC CLIMATE CONTROL (ACC) POWER AND GROUND DISTRIBUTION

(For Component Locations See Page 323)

MY 1983/  
MY 1984/MY 1985

380 SL



SEE PAGE 301 FOR INDEX  
TO SCHEMATICS AND  
COMPONENT LOCATIONS  
FOR ACC.

1/87

107.045

REVISIONS:

141

THIS PAGE LEFT BLANK INTENTIONALLY

REVISIONS: